



# Reference Only

REPUBLIC FASTENER MANUFACTURING CORPORATION  
 1300 RANCHO Conejo BOULEVARD, NEWBURY PARK, CALIFORNIA 91320 (805) 498-6621

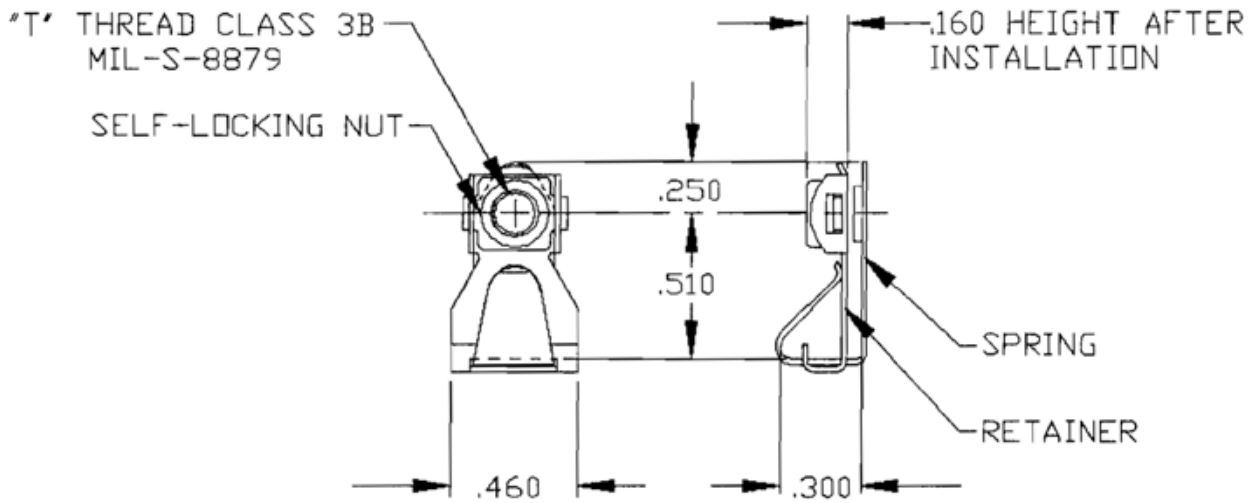


TABLE 1

FIRST DASH NUMBER	T THREAD	PANEL THICKNESS RANGE	EDGE DISTANCE RANGE	INSTALL HOLE SIZE	APPROX. WEIGHT LB/100
-04	.1120-40 UNJC-3B	.020-.125	.38-.50	.190-.229	.49
-06	.1380-32 UNJC-3B	.020-.125	.38-.50	.190-.229	.49
-08	.1640-32 UNJC-3B	.020-.125	.38-.50	.190-.229	.54
-3	.1900-32 UNJF-3B	.020-.125	.38-.50	.218-.261	.54

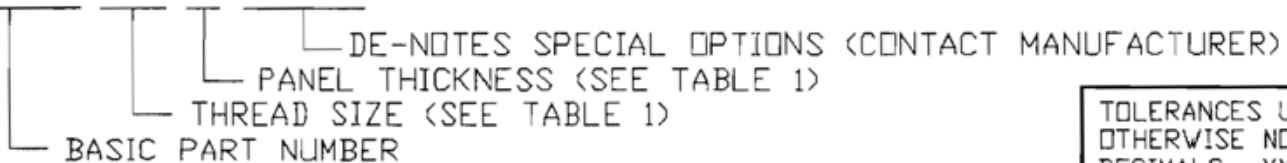
MATERIAL:  
 NUT, SPRING AND RETAINER\_\_\_CARBON STEEL, 1050 PER AMS5085, HEAT TREATED.

SURFACE TREATMENT:  
 SPRING AND RETAINER\_\_\_\_\_CADMIUM PLATE PER QQ-P-416 TYPE II, CLASS 1.  
 NUT\_\_\_\_\_CADMIUM PLATE PER QQ-P-416 TYPE II, CLASS 2,  
 MOLYBDENUM DISULFIDE DRY FILM LUBRICANT PER MIL-L-46010

NUT ELEMENT CONFORMS TO MIL-N-25027

EXAMPLE OF PART NUMBER WITH EXPLANATION OF CODING:

SL212-08-1 SP( )



TOLERANCES UNLESS OTHERWISE NOTED: DECIMALS: XX ±.020 XXX ±.010 ANGULAR: ±0°30'
SALES DRAWING NO: <b>SL212 SERIES</b>
CAGE 52828

APPROVED BY: UPP
REV. B DATE: 9-9-93

TITLE CLIP NUT, SELF-LOCKING 1/2" EDGE DISTANCE
---