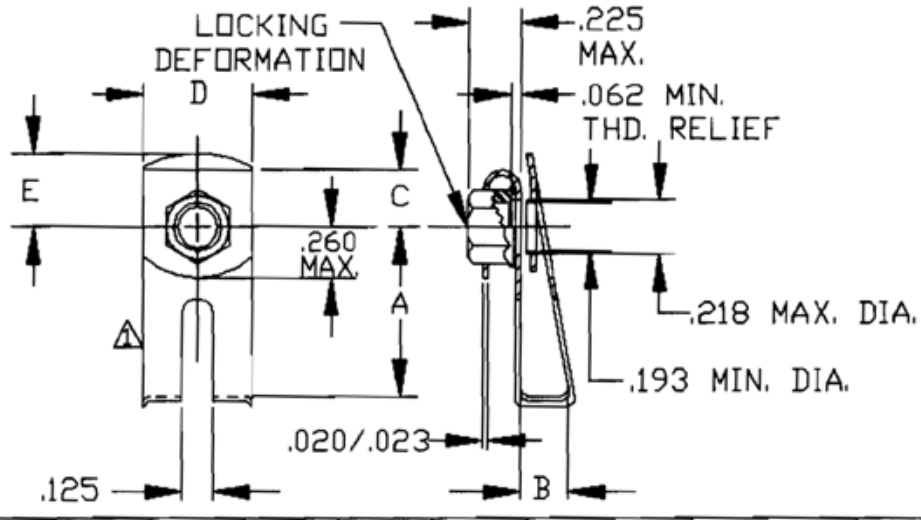




Reference Only

REPUBLIC FASTENER MANUFACTURING CORPORATION

1300 RANCHO Conejo BOULEVARD, NEWBURY PARK, CALIFORNIA 91320 (805) 498-6621



RFM PART NUMBER	THREAD SIZE MIL-S-8879	A MIN.	B MIN.	C MAX.	D MAX.	E MAX.	PANEL THICKNESS RANGE	NOMINAL EDGE MARGIN	INSTALL HOLE SIZE	APPROX. WEIGHT LB/100
RC600-7-08	.1640-32 UNJC-3B	.448	.125	.225	.400	.285	.020-.090	.43	.220-.230	.37
RC600-7-3	.1900-32 UNJF-3B	.470	.125	.225	.400	.285	.020-.090	.43	.220-.230	.38
RC600-8-3		.500	.095	.266	.447	.328	.020-.090	.50	.219-.261	.39
RC600-9-3		.575	.130	.225	.400	.285	.030-.100	.56	.220-.230	.40
RC600-10-3		.650	.095	.266	.447	.328	.020-.090	.65	.219-.261	.41
RC600-12-3		.725	.235	.266	.447	.328	.140-.230	.71	.219-.261	.44
RC600-8G-3		.500	.155	.266	.447	.328	.090-.150	.50	.219-.261	.39
RC600-10G-3		.650	.155	.266	.447	.328	.090-.150	.65	.219-.261	.42

MATERIAL: _____ CLIP - 1050 STEEL PER AMS5085
NUT - 1050 STEEL PER AMS5085 OR 4037 PER AMS6300

HEAT TREAT: _____ CLIP - HARDENED PER MIL-H-6875 EXCEPT AUSTEMPERED, 48-51 HRC.
NUT - TO MEET PERFORMANCE REQUIREMENTS OF MIL-N-25027, 46 MAX. HRC.

FINISH: _____ CLIP - CADMIUM PLATE, QQ-P-416, TYPE II, CLASS 1
NUT - CADMIUM PLATE, QQ-P-416, TYPE II, CLASS 2.

LUBRICATION: _____ NUT - SOLID FILM LUBRICANT PER MIL-L-46010, TYPE I MEETING THE REQUIREMENTS OF MIL-N-25027.

THREADS: _____ MIL-S-8879 (PRIOR TO ADDITION OF DRY FILM LUBRICANT).

PERFORMANCE: _____ NUT ELEMENT CONFORMS TO MIL-N-25027

NOTES:

- ⚠ THIS REPRESENTATION OF THE CLIP IS FOR ILLUSTRATION PURPOSES ONLY AND IS NOT INTENDED TO RESTRICT DESIGNS AND SHAPES WHICH WILL OTHERWISE CONFORM TO SPECIFICATION REQUIREMENTS AND ARE WITHIN THE ENVELOPE DIMENSIONS.
- ⚠ CLIP OPENING MUST BE SHAPED SO AS TO FACILITATE EASY INSTALLATION ON THE RESPECTIVE RANGE OF PANEL THICKNESS LISTED IN ABOVE TABLE.
- ⚠ ADDITIONAL RADIAL FLOAT CAN BE OBTAINED BY INCREASING INSTALLATION HOLE DIAMETER.

DIMENSIONS IN INCHES; TOLERANCE UNLESS OTHERWISE SPECIFIED: .XX ±.03, .XXX ±.010, ANGLES ±1/2°

APPROVED BY: UPP	TITLE NUT CLIP-ON, SELF-LOCKING, STEEL, 450°F.	SALES DRAWING NO: RC600
REV. A DATE: 8-31-93		CAGE 52828