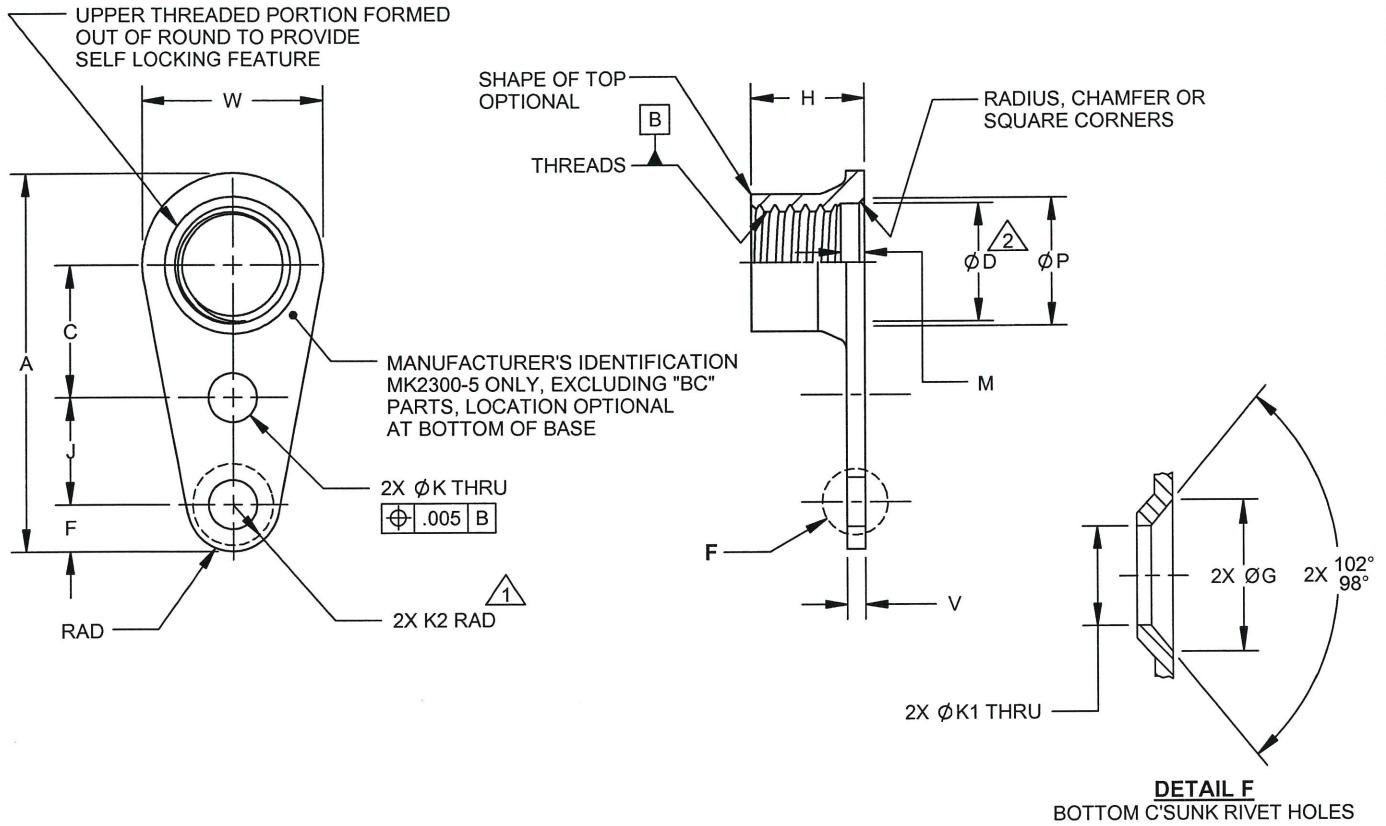


MANUFACTURE OF THE PROPRIETARY PARTS SHOWN HERE WITHOUT WRITTEN CONSENT OF ARCONIC FASTENING SYSTEMS IS ABSOLUTELY PROHIBITED.

THIS DRAWING EMBODIES ARCONIC FASTENING SYSTEMS CONFIDENTIAL, PROPRIETARY DESIGN & ALL DESIGN, MANUFACTURING PRODUCTION, USE & SALE RIGHTS REGARDING SAME ARE EXPRESSLY RESERVED.



DETAIL F
BOTTOM C'SUNK RIVET HOLES

AFS PRODUCTS PART NO.	THREADS PER AS8879	A	C	ØD	F	ØG	H	J	ØK	ØK1	K2	M	ØP	V	W	
		MAX		MIN	MIN		MAX				MIN	MIN	MAX	MAX	MAX	
MK2300-	04	.1120-40UNJC-3B	.550	.153 .143	.116	.071	----	.143	.221 .217	.071 .066	.081 .066	.066	----	.166 .206	.040 .047	.194 .242
	06	.1380-32UNJC-3B	.598	.176 .166	.142			.171								
	5	.3125-24UNJF-3B	1.026	.364 .354	.317	.125	.240 .220	.328	.271 .267	.135 .130	.145 .130	.130	.062	.417	.065	.505

MATERIAL: C1050 CARBON STEEL PER AMS5085 (UNS G10500).

FINISH: CADMIUM PLATE PER AMS-QQ-P-416, TYPE II, CLASS 2, PLUS SOLID FILM LUBRICANT COAT PER AS5272, TYPE I.

PERFORMANCE: NASM25027, EXCEPT AS FOLLOWS:
A) ALL NUTS SHALL MEET QUALIFICATION AND INSPECTION REQUIREMENTS.

VARIATION: ADD BC FOR BOTTOM C'SUNK RIVET HOLES.
EXAMPLE: MK2300-5BC.

NOTES: K2 IS CLEARANCE FOR ATTACHING RIVETS.
 FOR SIZES MK2300-06 AND SMALLER: COUNTERSINK WITHIN THE LIMITS OF ØD.

THIRD ANGLE PROJECTION EAR EXPORT CONTROLLED TECHNICAL DATA: DISTRIBUTION LIMITED TO U.S. PERSONS OR THOSE NON-U.S. PERSONS COVERED BY AN APPROPRIATE EXPORT LICENSE OR ALLOWED FOR BY THE APPROPRIATE REGULATIONS, ECCN: EAR99.

FILED AS: s_MK2300-(*)

APPROVED DATE 18FEB1969	CURRENT DESIGN ACTIVITY: ARCONIC Arconic Fastening Systems Fullerton Operations 800 S State College Boulevard Fullerton, California, 92831 http://www.arconic.com	TITLE: NUT - ANCHOR, 1 LUG, FIXED, SELF-LOCKING, MINIATURE	CAGE CODE: 15653
REV. LETTER AND DATE: A 27NOV2018			SALES DRAWING No.
CUSTOMER:			MK2300-(*)
			PAGE 1 OF 1

UNLESS OTHERWISE SPECIFIED, DIMENSIONS ARE IN INCHES & TO ASME Y14.5-2009 TOLERANCES: DECIMALS = ±.015; ANGLES = ±2°