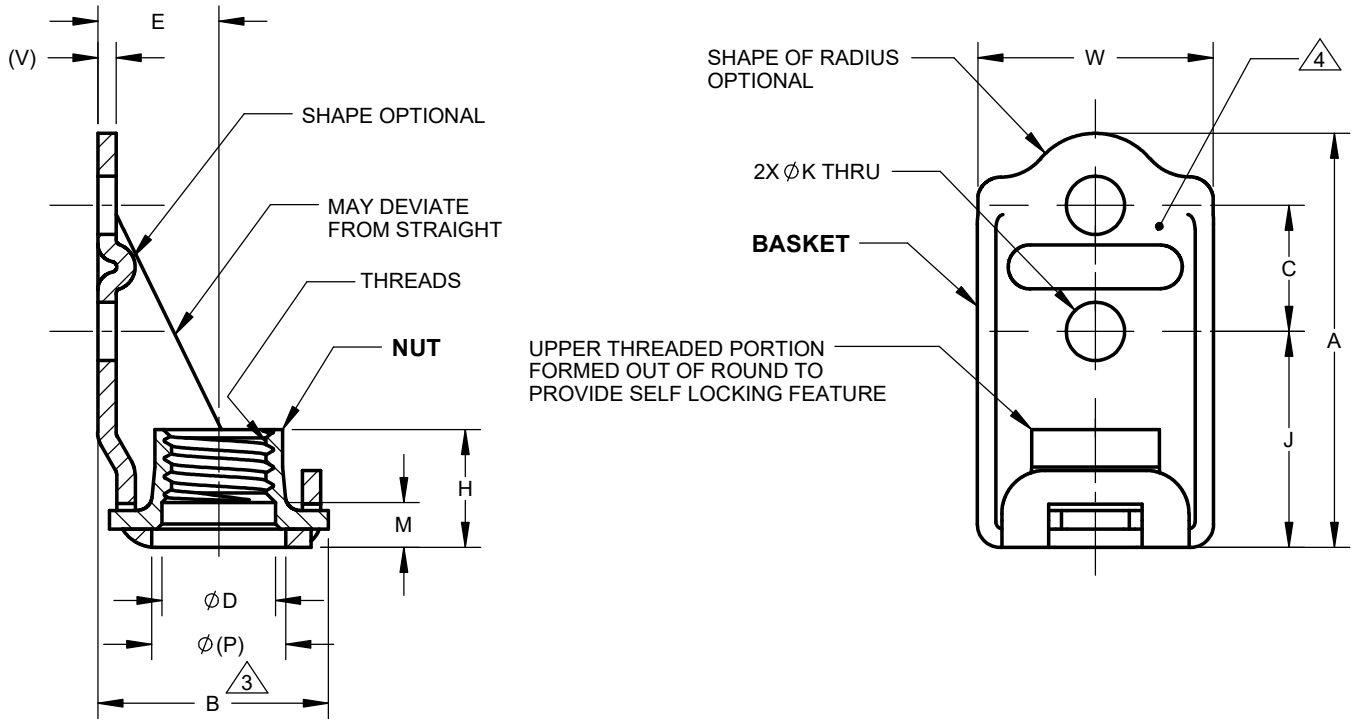


MANUFACTURE OF THE PROPRIETARY PARTS SHOWN HERE WITHOUT WRITTEN CONSENT OF HOWMET FASTENING SYSTEMS IS ABSOLUTELY PROHIBITED.



HFS PART NO.	THREADS PER AS8879	A	B	C	ØD	E	H	J	ØK	M	Ø(P)	(V)	W	APPROX WEIGHT lbs/100	
		MAX	MAX												MIN
MF6001-	04	.1120-40UNJC-3B	.684	.344	.221 .217	---	.175	.153	.330 .320	.103 .098	---	.180	.025	.325	.30
	06	.1380-32UNJC-3B					.165	.170							.32
	08	.1640-32UNJC-3B	.734	.425		.168	.215	.250	.380 .370		.062	.230	.032	.415	.52
	3	.1900-32UNJF-3B				.194	.205	.370	.54						

MATERIAL: NUT -- A286 CORROSION RESISTANT STEEL PER AMS5525, AMS5732, OR AMS5737 (UNS S66286).
BASKET -- 321 CORROSION RESISTANT STEEL PER AMS5510 (UNS S32100).

HEAT TREAT: Rc 49 MAX.

FINISH: NUT -- PASSIVATE PER AMS2700, PLUS SOLID FILM LUBE PER AS5272, TYPE I.
BASKET -- PASSIVATE PER AMS2700.

PERFORMANCE: NASM25027.

- NOTES:
- FLOATABILITY: .020 MINIMUM RADIALLY, FROM CENTERED POSITION.
 - SURFACE TEXTURE TO BE 125 MICRINCHES MAX, PER ASME B46.1.

3. B IS MAXIMUM DIMENSION WHEN NUT IS FULLY FLOATED.

4. MANUFACTURER'S IDENTIFICATION, PLUS THE LETTER C FOR CRES MATERIAL, LOCATED APPROX AS SHOWN ON BACK SIDE OF BASKET. ORIENTATION OPTIONAL.

© 2020 HOWMET AEROSPACE INC. ALL RIGHTS RESERVED.

THIS DRAWING EMBODIES HOWMET FASTENING SYSTEMS CONFIDENTIAL PROPRIETARY DESIGN & ALL DESIGN, MANUFACTURING PRODUCTION, USE & SALE RIGHTS REGARDING SAME ARE EXPRESSLY RESERVED.

FILED AS: S_MF6001- (*)

THIRD ANGLE PROJECTION EAR EXPORT CONTROLLED TECHNICAL DATA: DISTRIBUTION LIMITED TO U.S. PERSONS OR THOSE NON-U.S. PERSONS COVERED BY AN APPROPRIATE EXPORT LICENSE OR ALLOWED FOR BY THE APPROPRIATE REGULATIONS, ECCN: EAR99.

APPROVED DATE 13MAR1986	CURRENT DESIGN ACTIVITY: HOWMET AEROSPACE Howmet Fastening Systems 800 S State College Boulevard Fullerton, California, 92831 http://www.hfs.howmet.com	TITLE: NUT - ANCHOR, RIGHT ANGLE, MINIATURE, FLOATING, SELF-LOCKING, ASSEMBLY
REV. LETTER AND DATE: C 18SEP2020	UNLESS OTHERWISE SPECIFIED, DIMENSIONS ARE IN INCHES & TO ASME Y14.5-2018 TOLERANCES: DECIMALS = ±.010; ANGLES = ±2°	
CUSTOMER:		

CAGE CODE: 15653

SALES DRAWING No.

MF6001- (*)

SHEET 1 OF 1