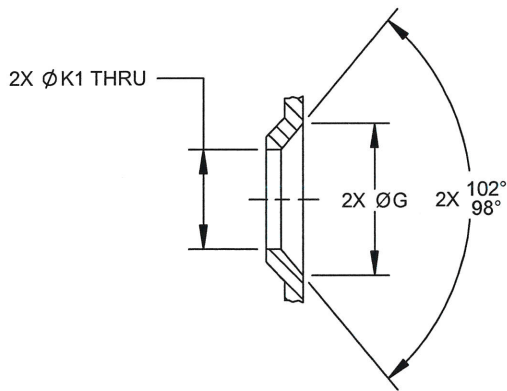
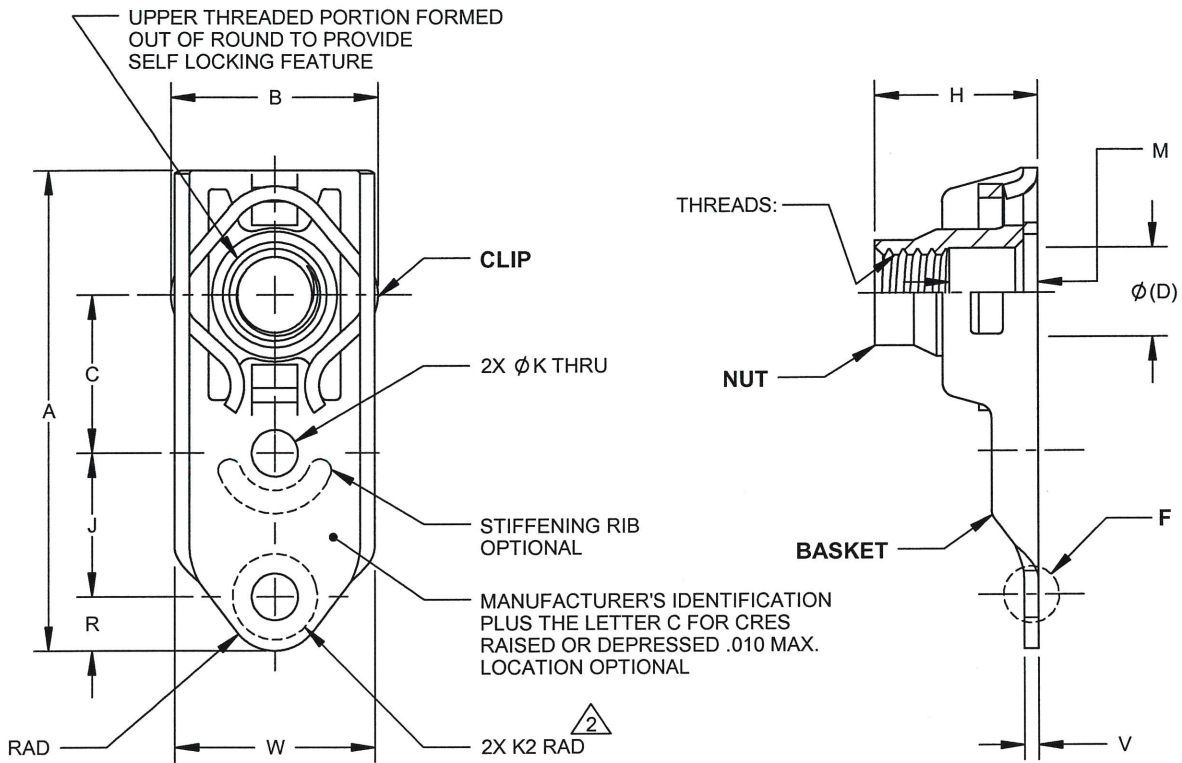
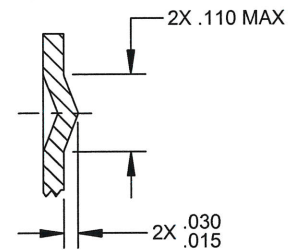


MANUFACTURE OF THE PROPRIETARY PARTS SHOWN HERE WITHOUT WRITTEN CONSENT OF ARCONIC FASTENING SYSTEMS IS ABSOLUTELY PROHIBITED.

THIS DRAWING EMBODIES ARCONIC FASTENING SYSTEMS CONFIDENTIAL PROPRIETARY DESIGN &amp; ALL DESIGN, MANUFACTURING PRODUCTION, USE &amp; SALE RIGHTS REGARDING SAME ARE EXPRESSLY RESERVED.



**DETAIL F**  
BOTTOM C'SUNK RIVET HOLES



**DETAIL F**  
PROJECTED WELD NIBS

THIRD ANGLE PROJECTION

EAR EXPORT CONTROLLED TECHNICAL DATA: DISTRIBUTION LIMITED TO U.S. PERSONS OR THOSE NON-U.S. PERSONS COVERED BY AN APPROPRIATE EXPORT LICENSE OR ALLOWED FOR BY THE APPROPRIATE REGULATIONS, ECCN: EAR99.

APPROVED DATE

04JUN1980

REV. LETTER AND DATE:

A 22JAN2019

CUSTOMER:

CURRENT DESIGN ACTIVITY:

**ARCONIC**

Arconic Fastening Systems  
Fullerton Operations  
800 S State College Boulevard  
Fullerton, California, 92831

http://www.arconic.com

TITLE:

NUT - ANCHOR, 1 LUG,  
FLOATING, REPLACEABLE,  
SELF-LOCKING, ASSEMBLY

UNLESS OTHERWISE SPECIFIED, DIMENSIONS ARE  
IN INCHES & TO ASME Y14.5-2009 TOLERANCES:  
DECIMALS =  $\pm .015$ ; ANGLES =  $\pm 2^\circ$

CAGE CODE: 15653

SALES DRAWING No.

F50733-(\*)-(\*)

PAGE 1 OF 3

FILED AS:

s\_F50733-(\*)-(\*)

MANUFACTURE OF THE PROPRIETARY PARTS SHOWN HERE WITHOUT WRITTEN CONSENT OF ARCONIC FASTENING SYSTEMS IS ABSOLUTELY PROHIBITED.

THIS DRAWING EMBODIES ARCONIC FASTENING SYSTEMS CONFIDENTIAL, PROPRIETARY DESIGN &amp; ALL DESIGN, MANUFACTURING PRODUCTION, USE &amp; SALE RIGHTS REGARDING SAME ARE EXPRESSLY RESERVED.

AFS PRODUCTS PART NO.		THREADS PER AS8879	A MAX	B MAX	C	Ø(D)	ØG	H MAX	J	ØK	ØK1	K2 MIN	M MIN	R MIN	V	W MAX	MAXIMUM WEIGHT lbs/100						
F50733-	08-1	.1640-32UNJC-3B	1.051	.484	.349 .339	.194	.210 .190	.250	.314 .310	.103 .098	.113 .098	.098	.070	.100	.037 .027	.445	.70						
	08-2							.312					.125				.77						
	08-3							.375					.188				.82						
	08-4							.438					.250				.87						
	08-5							.500					.313				.92						
	08-6							.562					.375				.97						
	3-1	.1900-32UNJF-3B						.250					.070				.70						
	3-2							.312					.125				.77						
	3-3							.375					.188				.82						
	3-4							.438					.250				.87						
	3-5							.500					.313				.92						
	3-6							.562					.375				.97						
	4-1	.2500-28UNJF-3B	1.306	.584	.505 .495	.254	.295	.070					.135 .130	.145 .130	.130	.125	.125	.045 .035	.643	1.23			
	4-2						.357	.125								1.33							
	4-3						.419	.188								1.42							
	4-4						.481	.250								1.50							
	4-5						.543	.313								1.60							
	4-6						.605	.375								1.68							
	5-1	.3125-24UNJF-3B	1.396	.720		.317	.240 .220	.344		.070	.135 .130	.145 .130				.130			.125	.125	.055 .045	.760	2.08
	5-2							.400		.125									2.14				
	5-3							.461		.188									2.25				
	5-4							.524		.250									2.37				
	5-5							.586		.313									2.48				
	5-6							.649		.375									2.59				
	6-1	.3750-24UNJF-3B	1.441	.840	.379		.240 .220	.380		.070			.135 .130	.145 .130	.130		.125	.125	.055 .045			.760	3.00
	6-2							.430		.125							3.15						
	6-3							.500		.188							3.30						
	6-4							.560		.250							3.45						
	6-5							.635		.313							3.60						
	6-6							.690		.375							3.75						

AFS PRODUCTS PART NO.	AXIAL TENSILE STRENGTH lbf MIN	PUSH OUT lbf MIN	SEATING TORQUE in-lbf	TORQUE OUT in-lbf
F50733-	08-(*)	2,000	80	45
	3-(*)	2,825	125	90
	4-(*)	5,060	150	160
	5-(*)	8,000	175	280
	6-(*)	11,900	125	240

THIRD ANGLE PROJECTION

EAR EXPORT CONTROLLED TECHNICAL DATA: DISTRIBUTION LIMITED TO U.S. PERSONS OR THOSE NON-U.S. PERSONS COVERED BY AN APPROPRIATE EXPORT LICENSE OR ALLOWED FOR BY THE APPROPRIATE REGULATIONS, ECCN: EAR99.

APPROVED DATE

04JUN1980

REV. LETTER AND DATE:

A 22JAN2019

CUSTOMER:

CURRENT DESIGN ACTIVITY:

**ARCONIC**

Arconic Fastening Systems  
Fullerton Operations  
800 S State College Boulevard  
Fullerton, California, 92831

<http://www.arconic.com>

TITLE:

NUT - ANCHOR, 1 LUG,  
FLOATING, REPLACEABLE,  
SELF-LOCKING, ASSEMBLY

UNLESS OTHERWISE SPECIFIED, DIMENSIONS ARE  
IN INCHES & TO ASME Y14.5-2009 TOLERANCES:  
DECIMALS = ±.015; ANGLES = ±2°

**CAGE CODE: 15653****SALES DRAWING No.****F50733-(\*)-(\*)****PAGE 2 OF 3**

FILED AS: s F50733-(\*)-(\*)


MANUFACTURE OF THE PROPRIETARY PARTS SHOWN HERE WITHOUT WRITTEN  
CONSENT OF ARCONIC FASTENING SYSTEMS IS ABSOLUTELY PROHIBITED.THIS DRAWING EMBODIES ARCONIC FASTENING SYSTEMS CONFIDENTIAL, PROPRIETARY DESIGN &  
ALL DESIGN, MANUFACTURING PRODUCTION, USE & SALE RIGHTS REGARDING SAME ARE EXPRESSLY RESERVED.

**MATERIAL:** NUT AND BASKET:  
ALLOY OR CARBON STEEL, HEAT TREATED.  
CLIP:  
XM-28 STAINLESS STEEL SPRING WIRE PER ASTM A313 (UNS S24100).

**FINISH:** NUT:  
F50733-(\*)-(\*) -- CADMIUM PLATE PER AMS-QQ-P-416, TYPE II, CLASS 1 OR 2,  
PLUS SOLID FILM LUBRICANT PER NAS3356.  
F50733X(\*)-(\*) -- CADMIUM PLATE PER AMS-QQ-P-416, TYPE II, CLASS 2.  
BASKET:  
CADMIUM PLATE PER AMS-QQ-P-416, TYPE II, CLASS 2.  
CLIP:  
PASSIVATE PER AMS2700, METHOD 1, TYPE 6.

**PERFORMANCE:** NAS3350, CLASS I, EXCEPT AS FOLLOWS:  
A) AXIAL TENSILE STRENGTH AS TABULATED.  
B) REUSABILITY OF 50 CYCLES USING CADMIUM PLATED STEEL BOLTS,  
SEATED TO SEATING TORQUE VALUES AS TABULATED.  
C) PUSH OUT AND TORQUE OUT VALUES AS TABULATED WHEN APPLIED  
SEPARATELY AND COMBINED.

**VARIATIONS:** ADD BC FOR BOTTOM C'SUNK RIVET HOLES.  
EXAMPLE: F50733-3-3BC.  
ADD P FOR PROJECTION WELD NIBS.  
EXAMPLE: F50733-3-3P.

**NOTES:** 1. FLOATABILITY: .030 RADIALLY MINIMUM, FROM CENTER POSITION.  
 2. K2 IS CLEARANCE FOR ATTACHING RIVETS.  
3. UNLESS OTHERWISE SPECIFIED:  
A) DIMENSIONS APPLY AFTER FINISH, BUT BEFORE LUBRICATION.

THIRD ANGLE  
PROJECTION EAR EXPORT CONTROLLED TECHNICAL DATA: DISTRIBUTION LIMITED TO U.S. PERSONS OR THOSE NON-U.S. PERSONS  
COVERED BY AN APPROPRIATE EXPORT LICENSE OR ALLOWED FOR BY THE APPROPRIATE REGULATIONS, ECCN: EAR99.

APPROVED DATE

04JUN1980

REV. LETTER AND DATE:

A 22JAN2019

CUSTOMER:

CURRENT DESIGN ACTIVITY:

**ARCONIC**Arconic Fastening Systems  
Fullerton Operations  
800 S State College Boulevard  
Fullerton, California, 92831  
<http://www.arconic.com>

TITLE:

NUT - ANCHOR, 1 LUG,  
FLOATING, REPLACEABLE,  
SELF-LOCKING, ASSEMBLYUNLESS OTHERWISE SPECIFIED, DIMENSIONS ARE  
IN INCHES & TO ASME Y14.5-2009 TOLERANCES:  
DECIMALS = ±.015; ANGLES = ±2°**CAGE CODE: 15653****SALES DRAWING No.****F50733-(\*)-(\*)**

PAGE 3 OF 3

FILED AS:

s\_F50733-(\*)-(\*)