

Voi-Shan • Tridair • Screwcorp

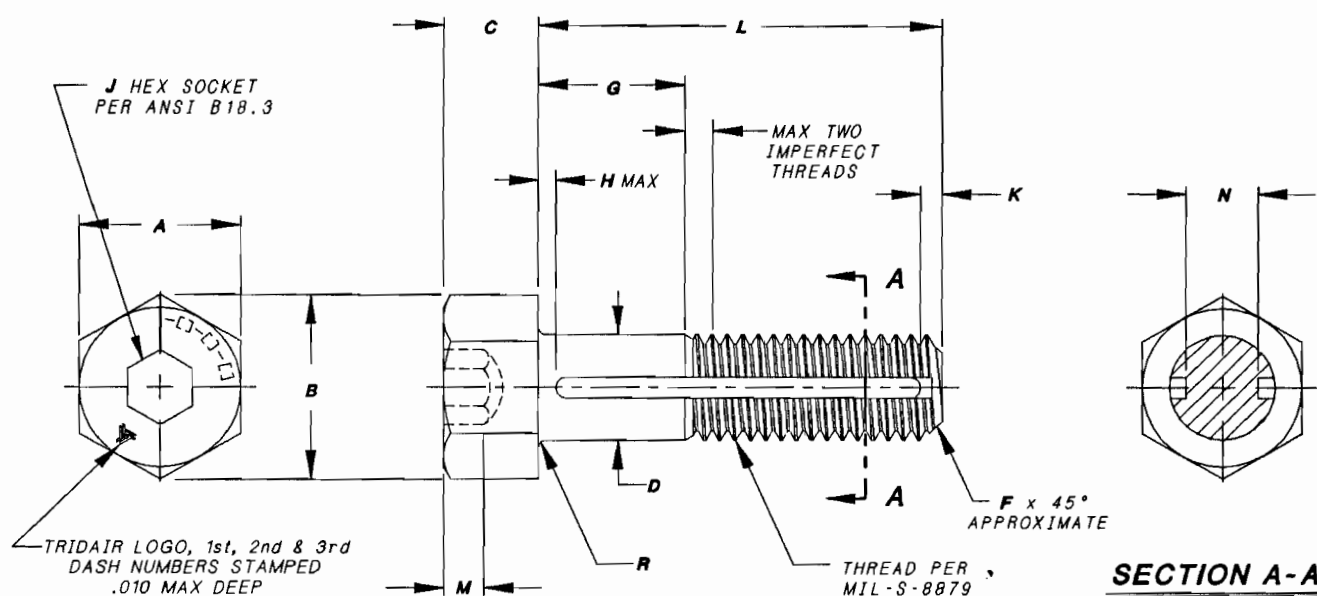
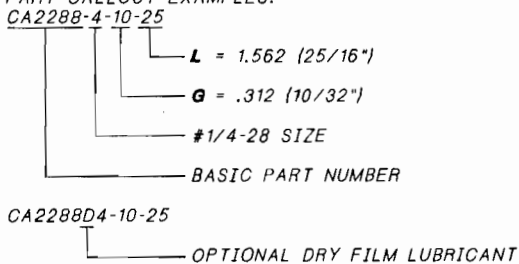


TABLE 1

FIRST DASH NUMBER	THREAD SIZE	A HEX	B REF	C	D DIA	F	H MAX	J	K	M MIN	N MIN	R RAD	ULTIMATE TENSILE STRENGTH MIN (CALCULATED)	ULTIMATE DOUBLE SHEAR STRENGTH MIN (CALCULATED)
-10	.190-32UNJF-3A	.314 .305	.348	.310 .300	.1895 .1885	.030	.050	.141	.040	.077	.108	.020 .010	2,425 LBS	2,900 LBS
-4	.250-28UNJF-3A	.376 .367	.410	.380 .370	.2495 .2485	.035	.050	.156	.040	.090	.162	.020 .010	4,625 LBS	5,550 LBS
-5	.3125-24UNJF-3A	.500 .489	.545	.460 .450	.3120 .3115	.040	.065	.188	.050	.120	.205	.020 .010	7,400 LBS	8,850 LBS
-6	.375-24UNJF-3A	.562 .551	.614	.460 .450	.3745 .3740	.040	.065	.312	.050	.182	.268	.025 .015	11,300 LBS	14,600 LBS

NOTES:

- MATERIAL: A-286 CRES PER AMS5731, AMS5737.
- HEAT TREAT: PER AMS 5737, AGE ONLY, TO ACHIEVE 160,000 PSI MINIMUM TENSILE.
- FINISH: STANDARD - PASSIVATE PER QQ-P-35.
OPTIONAL - DRY FILM LUBRICANT PER MIL-L-46010, TYPE 1 (JAW BOEING MUA NUMBER 1001-0036) DESIGNED BY LETTER "D" IN LIEU OF 1ST DASH.
- SCREW TO BE USED WITH CA2210-(-) IR RETAINING RING TO CAPTIVATE TO PANEL.
- PANEL PREPARATION: REFER TO CAL-STD-0260 DRAWING.
- INSTALLATION: REFER TO CA2210T-(-) DRAWING.
- PART CALLOUT EXAMPLES:



- TOLERANCES, UNLESS OTHERWISE SPECIFIED: .XX ±.02, .XXX ±.010, ANGLES ±2°.
- UNLESS OTHERWISE SPECIFIED, MANUFACTURING AND QUALITY ASSURANCE SHALL BE IN ACCORDANCE WITH NAS 4003.

INTERIM DOCUMENT REVISION		
Rev.	Date	DAF #
N/A1	10/21/10	94301

PROJECT NUMBER 92-034C

APPROVED DATE	23 FEB 93
REV. LETTER AND DATE	23 FEB 93
ECN NUMBER	ECN 32623

Fairchild AEROSPACE FASTENER DIVISION
ENGINEERING CENTER
3000 WEST LOMITA BOULEVARD
TORRANCE, CA 90505

SCREW, CAPTIVE, HEX HEAD,
CRES. 160 KSI,
MILLED SLOTS

CAGE CODE **92215**
TRIDAIR PRODUCT

CA2288-(-)-(-)-(-)

SHEET 1 OF 3

SCANNED

Voi-Shan • Tridair • Screwcorp

TABLE 2

.190-32 SIZE FIRST DASH NO.-10	G GRIP									L
	.062	.094	.125	.156	.187	.218	.250	.281	.312	LENGTH
-2-9	-3-9	-4-9	-5-9	-6-9	-7-9	-8-9	-9-9	-10-9		.562
-2-10	-3-10	-4-10	-5-10	-6-10	-7-10	-8-10	-9-10	-10-10		.625
-2-11	-3-11	-4-11	-5-11	-6-11	-7-11	-8-11	-9-11	-10-11		.687
-2-12	-3-12	-4-12	-5-12	-6-12	-7-12	-8-12	-9-12	-10-12		.750
-2-13	-3-13	-4-13	-5-13	-6-13	-7-13	-8-13	-9-13	-10-13		.812
-2-14	-3-14	-4-14	-5-14	-6-14	-7-14	-8-14	-9-14	-10-14		.875
-2-15	-3-15	-4-15	-5-15	-6-15	-7-15	-8-15	-9-15	-10-15		.937
-2-16	-3-16	-4-16	-5-16	-6-16	-7-16	-8-16	-9-16	-10-16		1.000
-2-17	-3-17	-4-17	-5-17	-6-17	-7-17	-8-17	-9-17	-10-17		1.062
-2-18	-3-18	-4-18	-5-18	-6-18	-7-18	-8-18	-9-18	-10-18		1.125
-2-19	-3-19	-4-19	-5-19	-6-19	-7-19	-8-19	-9-19	-10-19		1.187
-2-20	-3-20	-4-20	-5-20	-6-20	-7-20	-8-20	-9-20	-10-20		1.250
-2-21	-3-21	-4-21	-5-21	-6-21	-7-21	-8-21	-9-21	-10-21		1.312
-2-22	-3-22	-4-22	-5-22	-6-22	-7-22	-8-22	-9-22	-10-22		1.375
-2-23	-3-23	-4-23	-5-23	-6-23	-7-23	-8-23	-9-23	-10-23		1.437
-2-24	-3-24	-4-24	-5-24	-6-24	-7-24	-8-24	-9-24	-10-24		1.500
-2-25	-3-25	-4-25	-5-25	-6-25	-7-25	-8-25	-9-25	-10-25		1.562
-2-26	-3-26	-4-26	-5-26	-6-26	-7-26	-8-26	-9-26	-10-26		1.625
-2-27	-3-27	-4-27	-5-27	-6-27	-7-27	-8-27	-9-27	-10-27		1.687
-2-28	-3-28	-4-28	-5-28	-6-28	-7-28	-8-28	-9-28	-10-28		1.750

TABLE 3

.250-28 SIZE FIRST DASH NO.-4	G GRIP									L
	.062	.094	.125	.156	.187	.218	.250	.281	.312	LENGTH
-2-10	-3-10	-4-10	-5-10	-6-10	-7-10	-8-10	-9-10	-10-10		.625
-2-11	-3-11	-4-11	-5-11	-6-11	-7-11	-8-11	-9-11	-10-11		.687
-2-12	-3-12	-4-12	-5-12	-6-12	-7-12	-8-12	-9-12	-10-12		.750
-2-13	-3-13	-4-13	-5-13	-6-13	-7-13	-8-13	-9-13	-10-13		.812
-2-14	-3-14	-4-14	-5-14	-6-14	-7-14	-8-14	-9-14	-10-14		.875
-2-15	-3-15	-4-15	-5-15	-6-15	-7-15	-8-15	-9-15	-10-15		.937
-2-16	-3-16	-4-16	-5-16	-6-16	-7-16	-8-16	-9-16	-10-16		1.000
-2-17	-3-17	-4-17	-5-17	-6-17	-7-17	-8-17	-9-17	-10-17		1.062
-2-18	-3-18	-4-18	-5-18	-6-18	-7-18	-8-18	-9-18	-10-18		1.125
-2-19	-3-19	-4-19	-5-19	-6-19	-7-19	-8-19	-9-19	-10-19		1.187
-2-20	-3-20	-4-20	-5-20	-6-20	-7-20	-8-20	-9-20	-10-20		1.250
-2-21	-3-21	-4-21	-5-21	-6-21	-7-21	-8-21	-9-21	-10-21		1.312
-2-22	-3-22	-4-22	-5-22	-6-22	-7-22	-8-22	-9-22	-10-22		1.375
-2-23	-3-23	-4-23	-5-23	-6-23	-7-23	-8-23	-9-23	-10-23		1.437
-2-24	-3-24	-4-24	-5-24	-6-24	-7-24	-8-24	-9-24	-10-24		1.500
-2-25	-3-25	-4-25	-5-25	-6-25	-7-25	-8-25	-9-25	-10-25		1.562
-2-26	-3-26	-4-26	-5-26	-6-26	-7-26	-8-26	-9-26	-10-26		1.625
-2-27	-3-27	-4-27	-5-27	-6-27	-7-27	-8-27	-9-27	-10-27		1.687
-2-28	-3-28	-4-28	-5-28	-6-28	-7-28	-8-28	-9-28	-10-28		1.750

INTERIM DOCUMENT REVISION		
Rev.	Date	DAF #
N/A	10/21/10	94301

PROJECT NUMBER 92-034C

APPROVED DATE
23 FEB 93
REV. LETTER AND DATE
23 FEB 93
ECN NUMBER
ECN 32023

Fairchild AEROSPACE FASTENER DIVISION
 ENGINEERING CENTER
 3000 WEST LOMITA BOULEVARD
 TORRANCE, CA 90505

SCREW, CAPTIVE, HEX HEAD,
 CRES. 160 KSI,
 MILLED SLOTS

CAGE CODE 92215
 TRIDAIR PRODUCT

CA2288-()-()-()

SHEET 2 OF 3

SCANNED

Voi-Shan • Tridair • Screwcorp

TABLE 4

.3125-24 SIZE FIRST DASH NO.-5	G GRIP									L
	.062	.094	.125	.156	.187	.218	.250	.281	.312	LENGTH
	-2-10	-3-10	-4-10	-5-10	-6-10	-7-10	-8-10	-9-10	-10-10	.625
-2-11	-3-11	-4-11	-5-11	-6-11	-7-11	-8-11	-9-11	-10-11	.687	
-2-12	-3-12	-4-12	-5-12	-6-12	-7-12	-8-12	-9-12	-10-12	.750	
-2-13	-3-13	-4-13	-5-13	-6-13	-7-13	-8-13	-9-13	-10-13	.812	
-2-14	-3-14	-4-14	-5-14	-6-14	-7-14	-8-14	-9-14	-10-14	.875	
-2-15	-3-15	-4-15	-5-15	-6-15	-7-15	-8-15	-9-15	-10-15	.937	
-2-16	-3-16	-4-16	-5-16	-6-16	-7-16	-8-16	-9-16	-10-16	1.000	
-2-17	-3-17	-4-17	-5-17	-6-17	-7-17	-8-17	-9-17	-10-17	1.062	
-2-18	-3-18	-4-18	-5-18	-6-18	-7-18	-8-18	-9-18	-10-18	1.125	
-2-19	-3-19	-4-19	-5-19	-6-19	-7-19	-8-19	-9-19	-10-19	1.187	
-2-20	-3-20	-4-20	-5-20	-6-20	-7-20	-8-20	-9-20	-10-20	1.250	
-2-21	-3-21	-4-21	-5-21	-6-21	-7-21	-8-21	-9-21	-10-21	1.312	
-2-22	-3-22	-4-22	-5-22	-6-22	-7-22	-8-22	-9-22	-10-22	1.375	
-2-23	-3-23	-4-23	-5-23	-6-23	-7-23	-8-23	-9-23	-10-23	1.437	
-2-24	-3-24	-4-24	-5-24	-6-24	-7-24	-8-24	-9-24	-10-24	1.500	
-2-25	-3-25	-4-25	-5-25	-6-25	-7-25	-8-25	-9-25	-10-25	1.562	
-2-26	-3-26	-4-26	-5-26	-6-26	-7-26	-8-26	-9-26	-10-26	1.625	
-2-27	-3-27	-4-27	-5-27	-6-27	-7-27	-8-27	-9-27	-10-27	1.687	
-2-28	-3-28	-4-28	-5-28	-6-28	-7-28	-8-28	-9-28	-10-28	1.750	

TABLE 5

.375-24 SIZE FIRST DASH NO.-6	G GRIP									L
	.062	.094	.125	.156	.187	.218	.250	.281	.312	LENGTH
	-2-10	-3-10	-4-10	-5-10	-6-10	-7-10	-8-10	-9-10	-10-10	.625
-2-11	-3-11	-4-11	-5-11	-6-11	-7-11	-8-11	-9-11	-10-11	.687	
-2-12	-3-12	-4-12	-5-12	-6-12	-7-12	-8-12	-9-12	-10-12	.750	
-2-13	-3-13	-4-13	-5-13	-6-13	-7-13	-8-13	-9-13	-10-13	.812	
-2-14	-3-14	-4-14	-5-14	-6-14	-7-14	-8-14	-9-14	-10-14	.875	
-2-15	-3-15	-4-15	-5-15	-6-15	-7-15	-8-15	-9-15	-10-15	.937	
-2-16	-3-16	-4-16	-5-16	-6-16	-7-16	-8-16	-9-16	-10-16	1.000	
-2-17	-3-17	-4-17	-5-17	-6-17	-7-17	-8-17	-9-17	-10-17	1.062	
-2-18	-3-18	-4-18	-5-18	-6-18	-7-18	-8-18	-9-18	-10-18	1.125	
-2-19	-3-19	-4-19	-5-19	-6-19	-7-19	-8-19	-9-19	-10-19	1.187	
-2-20	-3-20	-4-20	-5-20	-6-20	-7-20	-8-20	-9-20	-10-20	1.250	
-2-21	-3-21	-4-21	-5-21	-6-21	-7-21	-8-21	-9-21	-10-21	1.312	
-2-22	-3-22	-4-22	-5-22	-6-22	-7-22	-8-22	-9-22	-10-22	1.375	
-2-23	-3-23	-4-23	-5-23	-6-23	-7-23	-8-23	-9-23	-10-23	1.437	
-2-24	-3-24	-4-24	-5-24	-6-24	-7-24	-8-24	-9-24	-10-24	1.500	
-2-25	-3-25	-4-25	-5-25	-6-25	-7-25	-8-25	-9-25	-10-25	1.562	
-2-26	-3-26	-4-26	-5-26	-6-26	-7-26	-8-26	-9-26	-10-26	1.625	
-2-27	-3-27	-4-27	-5-27	-6-27	-7-27	-8-27	-9-27	-10-27	1.687	
-2-28	-3-28	-4-28	-5-28	-6-28	-7-28	-8-28	-9-28	-10-28	1.750	

INTERIM DOCUMENT REVISION		
Rev.	Date	DAF #
N/A	10/21/10	94301

PROJECT NUMBER 92-034C

APPROVED DATE	23 FEB 93
REV. LETTER AND DATE	23 FEB 93
ECN NUMBER	ECN 32623

Fairchild AEROSPACE FASTENER DIVISION
ENGINEERING CENTER
 3000 WEST LOMITA BOULEVARD
 TORRANCE, CA 90505

CAGE CODE **92215**
 TRIDAIR PRODUCT

SCREW, CAPTIVE, HEX HEAD,
 CRES. 160 KSI,
 MILLED SLOTS

CA2288-()-()-()

SHEET 3 OF 3

SEALING