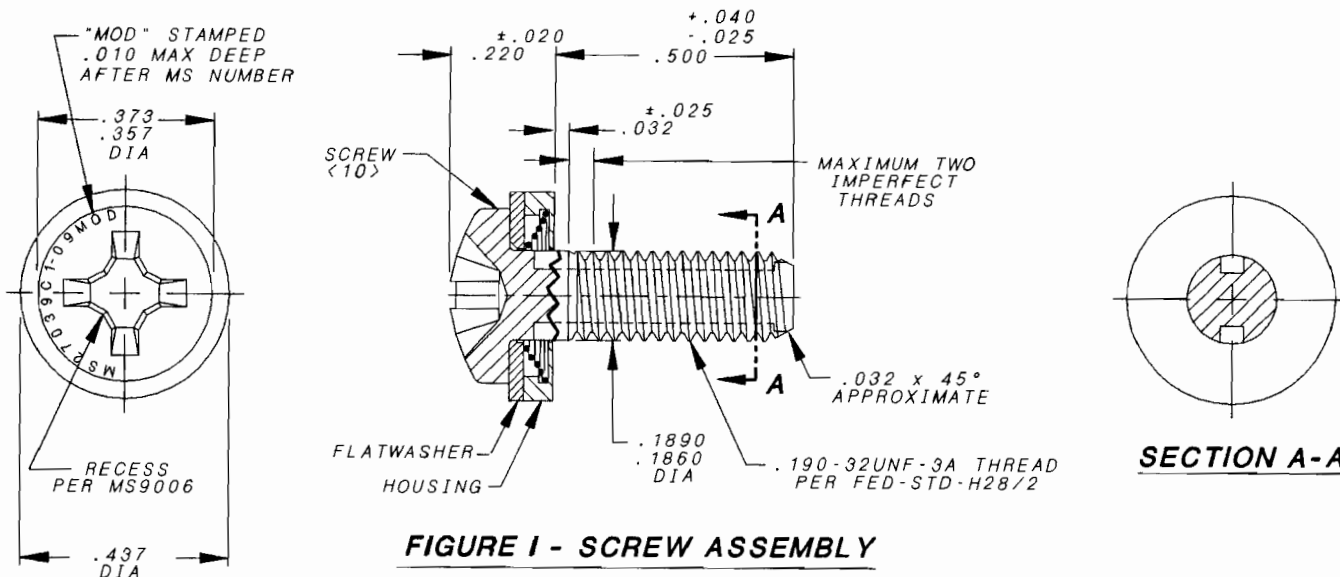
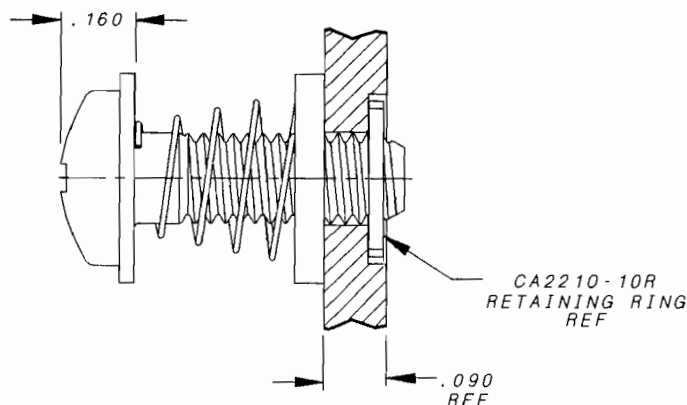


Voi-Shan • Tridair • Screwcorp



**FIGURE I - SCREW ASSEMBLY**



**FIGURE II - INSTALLED & RETRACTED**

**NOTES:**

1. MATERIAL: SCREW A286 CRES PER MS27039.  
HOUSING- 300 SERIES CRES PER AMS5640, ASTM-A555, ASTM-A581.  
SPRING- 302 CRES PER ASTM-A313.  
FLATWASHER - 302 CRES PER MIL-S-5059.
2. HEAT TREAT: SCREW ONLY - 130,000 PSI MIN TENSILE.
3. FINISH: ALL COMPONENTS - PASSIVATED PER QQ-P-35.
4. RECOMMENDED SEATING TORQUE: 30-45 IN-LBS.
5. THIS SCREW ASSEMBLY IS DESIGNED TO BE USED WITH A CA2210-10R RETAINING RING TO CAPTIVATE TO PANEL.
6. PANEL PREPARATION: REFER TO CAL-STD-0260.
7. REFER TO TRIDAIR DRAWING CA2210T-( ) FOR INSTALLATION PROCEDURE AND REQUIRED TOOL.
8. PART CALLOUT : CA2266-10-0500

INDICATES .500 LENGTH  
#10-32 SIZE  
BASIC PART NUMBER

<10> SCREW IS A MODIFIED MS27039C1-09.

11. STRENGTHS (AFTER MODIFICATION):  
11.1. ULTIMATE TENSILE: 1970 LBS MIN.  
11.2. ULTIMATE DOUBLE SHEAR: 2570 LBS MIN.
12. TOLERANCES, UNLESS OTHERWISE SPECIFIED: .XX ±.02, .XXX ±.010, ANGLES: ±2°.

INTERIM DOCUMENT REVISION		
Rev	Date	DAF #
N/A1	10/21/10	94301

PROJECT NUMBER: 92-163

APPROVED DATE	18 MAY 92
REV. LETTER AND DATE	<del>10 MAY 92</del>
ECN NUMBER	<del>ECN 30207</del>

**Fairchild** AEROSPACE FASTENER DIVISION  
ENGINEERING R&D CENTER  
1 CIVIC PLAZA, SUITE 500  
CARSON, CA 90745

**CAPTIVE SCREW ASSEMBLY  
SELF-RETRACTING, "CRIMPRING" TYPE,  
#10-32 SIZE**

CAGE CODE **92215**

**CA2266-10-0500**

SHEET 1 OF 1

SCANNED