

MANUFACTURE OF THE PROPRIETARY PARTS SHOWN HERE WITHOUT WRITTEN CONSENT IS ABSOLUTELY PROHIBITED

THIS DRAWING EMBODIES A CONFIDENTIAL, PROPRIETARY DESIGN & ALL DESIGN, MANUFACTURING PRODUCTION, USE & SALE RIGHTS REGARDING SAME ARE EXPRESSLY RESERVED.

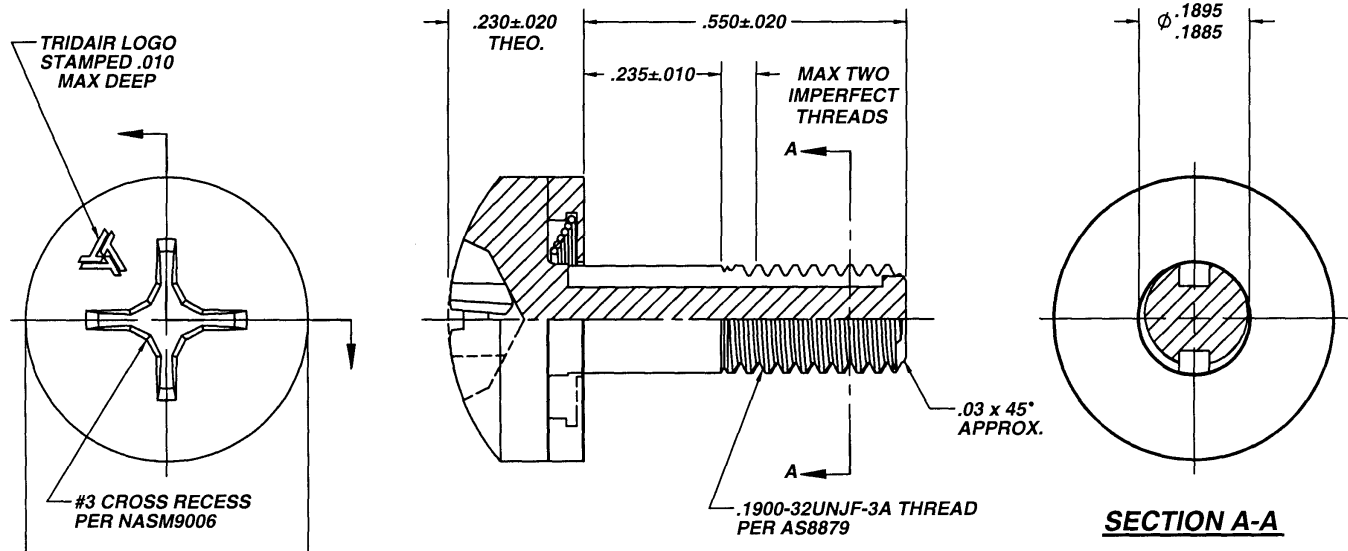


FIGURE I - SCREW ASSEMBLY

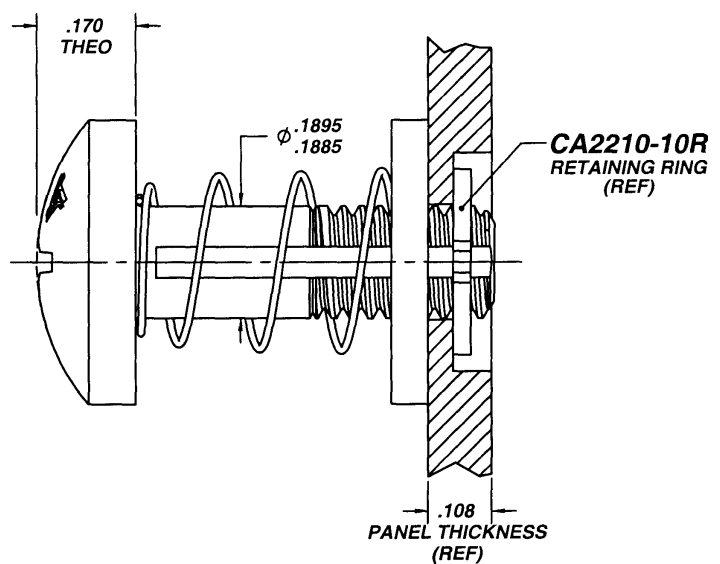


FIGURE II - INSTALLED & RETRACTED

NOTES:

1. MATERIAL: SCREW: A-286 CRES PER AMS5731, AMS5732.
HOUSING: 300 SERIES CRES PER AMS5640, ASTM-A555, AND/OR ASTMA581.
SPRING: 302 CRES PER ASTM-A313.
2. HEAT TREAT: SCREW ONLY: 160,000 PSI MIN TENSILE.
3. FINISH: PASSIVATE PER AMS2700.
4. RECOMMENDED SEATING TORQUE: 36-55 IN-LBS.
5. THIS SCREW ASSEMBLY IS DESIGNED TO BE USED WITH A CA2210-10R RETAINING RING TO CAPTIVATE TO PANEL.
6. PANEL PREPARATION: REFER TO CAL-STD-0260.
7. REFER TO ALCOA DRAWING CA2210T-() FOR INSTALLATION PROCEDURE AND REQUIRED TOOL.
8. PART CALLOUT: CA2259 - 10 - 0550

INTERIM DOCUMENT REVISION		
Rev.	Date	DAF #
A1	10/6/10	94301

.550 LENGTH
 #10-32 SIZE
 BASIC PART NUMBER

INTERIM DOCUMENT REVISION		
Rev.	Date	DAF#
A2	10/8/2018	117431

CA2259-10-0550 | PROJ. 92-171

ORIGINAL DESIGN ACTIVITY: CAGE CODE 29372

APPROVED DATE 25 MAR 1992
REV. LETTER AND DATE A 09 DEC 2008
DAF NUMBER 80027

CURRENT DESIGN ACTIVITY:

ARCONIC
 Arconic Fastening Systems
TRIDAIR PRODUCTS
 3018 W. LOMITA BLVD.
 TORRANCE, CA 90505

TITLE: **CAPTIVE SCREW ASSEMBLY
 SELF-RETRACTING, "CRIMPRING" TYPE,
 #10-32 SIZE**

UNLESS OTHERWISE SPECIFIED
 DIMENSIONS ARE IN INCHES &
 ASME Y14.5M TOLERANCES:

ANGLES = ± 2°
 DECIMALS .XX = ± .02
 .XXX = ± .010

CURRENT DESIGN ACTIVITY: CAGE CODE: 29372
SALES DRAWING NO. CA2259-10-0550
SHEET 1 OF 1