

FIGURE I - SCREW ASSEMBLY

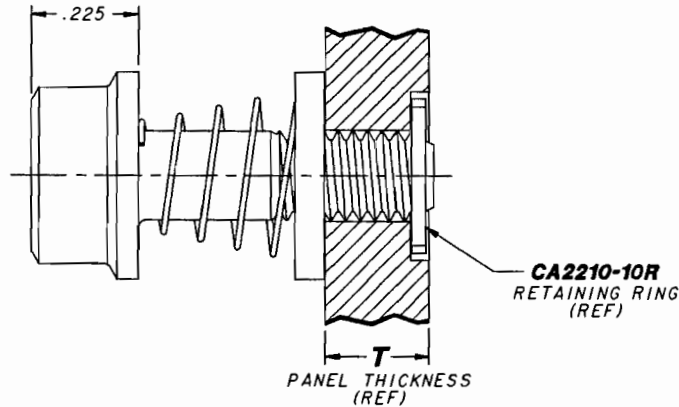


FIGURE II - INSTALLED & RETRACTED

2nd DASH NUMBER	G	L	T	APPROX. WEIGHT LBS. PER 100 PCS.
-0441	.094	.441	.094	1.33
-0547	.200	.547	.200	1.41
-0567	.220	.567	.220	1.43

NOTES:

- MATERIAL: SCREW- 17-4PH CRES PER AMS5643.
HOUSING- 300 SERIES CRES PER AMS5640, ASTM-A555, ASTM-A581.
SPRING- 302 CRES PER ASTM-A313.
- HEAT TREAT: SCREW ONLY- COND. H1025 (155 KSI MIN.) PER MIL-H-6875.
- FINISH: SCREW-CADMIUM PLATED PER QQ-P-416, TYPE II, CLASS 2.
OTHER COMPONENTS- PASSIVATED PER QQ-P-35.
- RECOMMENDED SEATING TORQUE: 36-55 IN-LBS.
- THIS SCREW ASSEMBLY IS DESIGNED TO BE USED WITH A CA2210-10R RETAINING RING TO CAPTIVATE TO PANEL.
- PANEL PREPARATION: REFER TO CAL-STD-0260.
- REFER TO TRIDAIR DRAWING CA2210T-() FOR INSTALLATION PROCEDURE AND REQUIRED TOOL.
- PART CALLOUT EXAMPLE: CA2248-10-0441

'L' = .441
 #10-32 SIZE
 BASIC PART NUMBER

INTERIM DOCUMENT REVISION	
Rev.	Date
N/A1	10/21/10
	94301

DRAWING PROVIDES FORM, FIT AND FUNCTION DATA. DO NOT ATTEMPT TO MANUFACTURE PRODUCT USING THIS DRAWING.

DRAWN BY:	A. PINKNEY	DATE	1-13-92
MFG. ENGRG:		DATE	
APPROVED BY:	<i>[Signature]</i>	DATE	1-13-92
APPROVED BY:		DATE	
PROJECT NUMBER:	92-083		
S42760			

TITLE: CAPTIVE SCREW ASSEMBLY SELF-RETRACTING, "CRIMPRING" TYPE, #10-32 SIZE		
UNLESS OTHERWISE SPECIFIED:	MILLIMETERS	SURFACE FINISH
TOLERANCES:	± 0.50	125 MICROINCHES
DECIMALS: .XX ± .02		
.XXX ± .010	± 0.25	
ANGLES: ± 2°		

	Reznord SFD 3000 W. Lamita Blvd. Torrance, CA 90505 213/530-2220
CA2248-10-11	
FSC:29372	SHEET / OF /

REVISION 1-13-92 - ECO 26222

SCANNED