

FIGURE I - SCREW ASSEMBLY

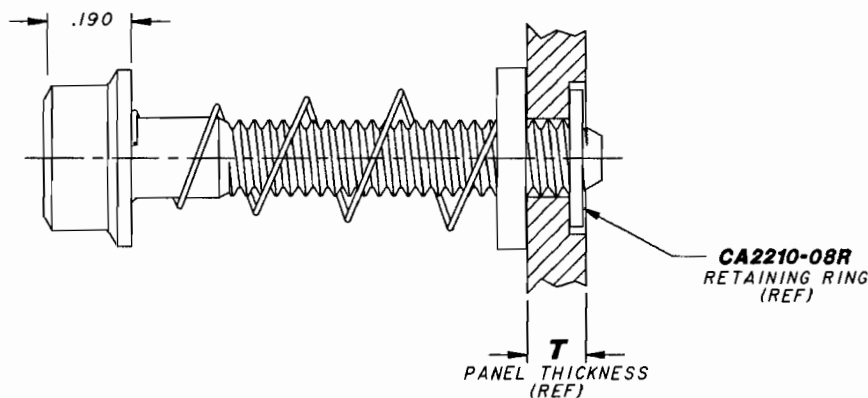


FIGURE II - INSTALLED & RETRACTED

2nd DASH NUMBER	G	L	T	APPROX. WEIGHT LBS. PER 100 PCS.
-0416	.190	.416	.190	.90
-0476	.250	.476	.250	.95
-0543	.235	.543	.235	1.00
-0625	.190	.625	.190	1.05

NOTES:

- MATERIAL: SCREW- 17-4PH CRES PER AMS5643.
HOUSING- 300 SERIES CRES PER AMS5640, ASTM-A555, ASTM-A581.
SPRING- 302 CRES PER ASTM-A313.
- HEAT TREAT: SCREW ONLY- COND. H1025 (155 KSI MIN.) PER MIL-H-6875.
- FINISH: SCREW-CADMIUM PLATED PER QQ-P-416, TYPE II, CLASS 2.
OTHER COMPONENTS- PASSIVATED PER QQ-P-35.
- RECOMMENDED SEATING TORQUE: 21-32 IN-LBS.
- THIS SCREW ASSEMBLY IS DESIGNED TO BE USED WITH A CA2210-08R RETAINING RING TO CAPTIVATE TO PANEL.
- PANEL PREPARATION: REFER TO CAL-STD-0260.
- REFER TO TRIDAIR DRAWING CA2210T-() FOR INSTALLATION PROCEDURE AND REQUIRED TOOL.
- PART CALLOUT EXAMPLE: CA2247-08-0416

"L" = .416
#8-32 SIZE
BASIC PART NUMBER

INTERIM DOCUMENT REVISION	
Rev.	Date
N/A	10/21/10
DAF #	94301

DRAWING PROVIDES FORM, FIT AND FUNCTION DATA. DO NOT ATTEMPT TO MANUFACTURE PRODUCT USING THIS DRAWING.

DRAWN BY:	DATE:	TITLE:
A. PINKNEY	12-16-91	CAPTIVE SCREW ASSEMBLY SELF-RETRACTING, 'CRIMPRING' TYPE, #8-32 SIZE
MFG. ENGRG:	DATE:	
APPROVED BY:	DATE:	
APPROVED BY:	DATE:	UNLESS OTHERWISE SPECIFIED:
PROJECT NUMBER:	92-083	TOLERANCES: DECIMALS: .XX ± .02 .XXX ± .010 ANGLES: ± 2°
S42753		MILLIMETERS ± 0.50 ± 0.25
		SURFACE FINISH 125 MICROINCHES

		Reznord SFD 3000 W. Lomita Blvd. Torrance, CA 90505 213/530-2220
CA2247-08-[]		
FSC:29372	SHEET / OF /	

ECO 26170 12-16-91 REVISION

SCANNED