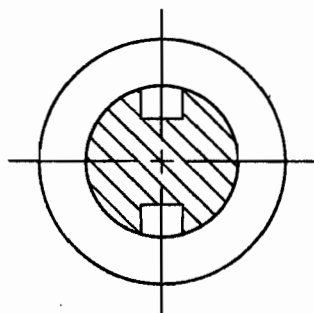
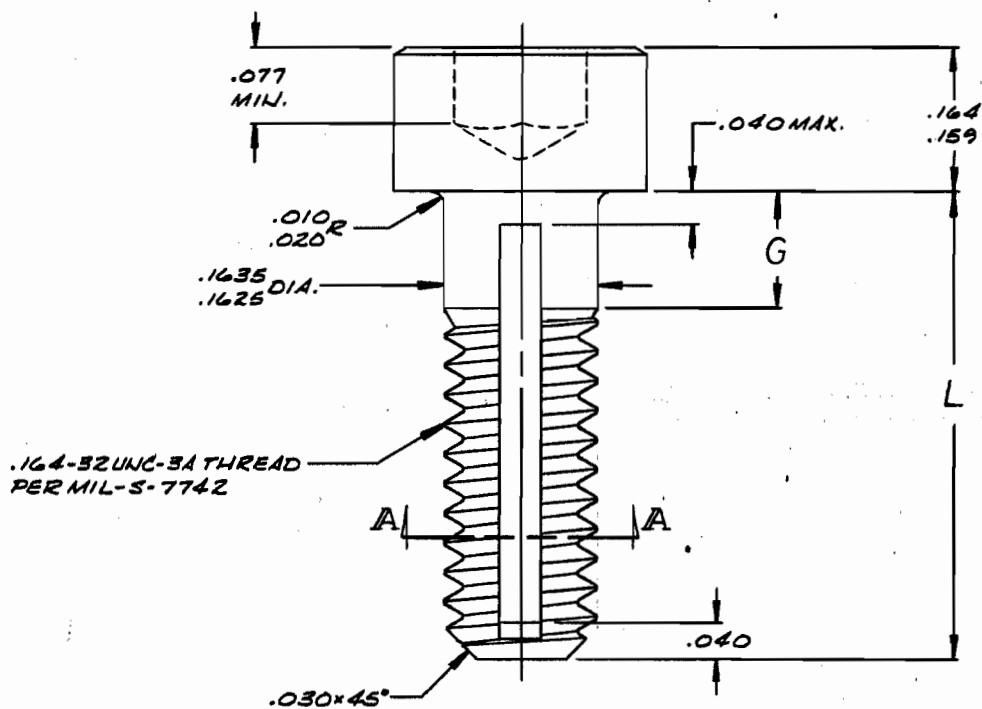
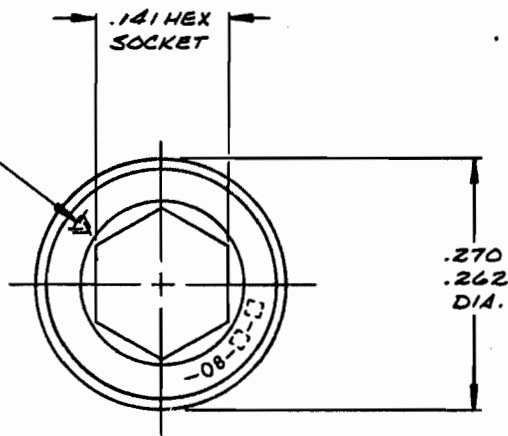


TRIDAIR LOGO, 1ST, 2ND & 3RD
DASH NUMBERS STAMPED
.010 MAX. DEEP.



SECTION A-A

INTERIM DOCUMENT REVISION		
Rev	Date	DAF #
N/A1	10/21/10	94301

DRAWING PROVIDES FORM, FIT AND
FUNCTION DATA. DO NOT ATTEMPT TO
MANUFACTURE PRODUCT USING THIS
DRAWING.

DRAWN BY:	DATE	TITLE:
J. STAFFORD	8-6-90	SCREW, CAPTIVE, SOCKET HEAD, CRES 160 KSI, #8-32 SIZE
MFG. ENGRG:	DATE	
APPROVED BY:	DATE	
[Signature]	8/6/90	
APPROVED BY:	DATE	UNLESS OTHERWISE SPECIFIED:
PROJECT NUMBER	91-011	TOLERANCES:
		DECIMALS: .XX ± .02
		.XXX ± .010
		ANGLES: ± 2°

	MILLIMETERS	SURFACE FINISH
	± 0.50	125 MICROINCHES
	± 0.25	



Round SFJ
3000 W. Lomita Blvd.
Torrance, CA 90505
213/530-2220

CA2222-08-()-()

FSC: 29372

SHEET 1 OF 2

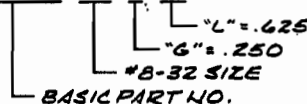
REVISION 8/6/90 [Signature] 50024563

SCANNED

		G GRIP								L	
		.062	.094	.125	.156	.187	.218	.250	.281	.312	LENGTH
1ST DASH NO. - 08	-2-7	-3-7	-4-7	-5-7	-6-7	-7-7	-8-7	-9-7	-10-7		.437
	-2-8	-3-8	-4-8	-5-8	-6-8	-7-8	-8-8	-9-8	-10-8		.500
	-2-9	-3-9	-4-9	-5-9	-6-9	-7-9	-8-9	-9-9	-10-9		.562
	-2-10	-3-10	-4-10	-5-10	-6-10	-7-10	-8-10	-9-10	-10-10		.625
	-2-11	-3-11	-4-11	-5-11	-6-11	-7-11	-8-11	-9-11	-10-11		.687
	-2-12	-3-12	-4-12	-5-12	-6-12	-7-12	-8-12	-9-12	-10-12		.750
	-2-13	-3-13	-4-13	-5-13	-6-13	-7-13	-8-13	-9-13	-10-13		.812
	-2-14	-3-14	-4-14	-5-14	-6-14	-7-14	-8-14	-9-14	-10-14		.875
	-2-15	-3-15	-4-15	-5-15	-6-15	-7-15	-8-15	-9-15	-10-15		.937
	-2-16	-3-16	-4-16	-5-16	-6-16	-7-16	-8-16	-9-16	-10-16		1.000
164-32 SIZE	-2-17	-3-17	-4-17	-5-17	-6-17	-7-17	-8-17	-9-17	-10-17		1.062
	-2-18	-3-18	-4-18	-5-18	-6-18	-7-18	-8-18	-9-18	-10-18		1.125
	-2-19	-3-19	-4-19	-5-19	-6-19	-7-19	-8-19	-9-19	-10-19		1.187
	-2-20	-3-20	-4-20	-5-20	-6-20	-7-20	-8-20	-9-20	-10-20		1.250
	-2-21	-3-21	-4-21	-5-21	-6-21	-7-21	-8-21	-9-21	-10-21		1.312
	-2-22	-3-22	-4-22	-5-22	-6-22	-7-22	-8-22	-9-22	-10-22		1.375
	-2-23	-3-23	-4-23	-5-23	-6-23	-7-23	-8-23	-9-23	-10-23		1.437
	-2-24	-3-24	-4-24	-5-24	-6-24	-7-24	-8-24	-9-24	-10-24		1.500
	-2-25	-3-25	-4-25	-5-25	-6-25	-7-25	-8-25	-9-25	-10-25		1.562
	-2-26	-3-26	-4-26	-5-26	-6-26	-7-26	-8-26	-9-26	-10-26		1.625
-2-27	-3-27	-4-27	-5-27	-6-27	-7-27	-8-27	-9-27	-10-27		1.687	
-2-28	-3-28	-4-28	-5-28	-6-28	-7-28	-8-28	-9-28	-10-28		1.750	


NOTES:

- MATERIAL: A-286 CRES PER AMS5731, AMS5737.
- HEAT TREAT: 160,000 PSI MIN. TENSILE.
- FINISH: PASSIVATE PER QQ-P-35.
- STRENGTHS (CALCULATED):
 - MINIMUM ULTIMATE TENSILE: 1660 LBS.
 - MINIMUM ULTIMATE SINGLE SHEAR: 980 LBS.
- SCREW TO BE USED WITH A CA2210-08R CRIMP-ON RETAINING RING TO CAPTIVATE TO PANEL.
- PANEL PREPARATION: REFER TO CAL-STD-0260.
- INSTALLATION: REFER TO TRIDAIR DRAWING CA2210T-()*
- PART CALLOUT EXAMPLE: CA2222-08-8-10



INTERIM DOCUMENT REVISION		
Rev	Date	DAF #
N/A1	10/24/10	94310

DRAWING PROVIDES FORM, FIT AND FUNCTION DATA. DO NOT ATTEMPT TO MANUFACTURE PRODUCT USING THIS DRAWING.

DRAWN BY: J. STAFFORD	DATE 8-6-90	TITLE: SCREW, CAPTIVE, SOCKET HEAD, CRES 160KSI, #8-32 SIZE	 Revision 350 3000 W. Loma Rd. Torrance, CA 90505 213/530-2220
MFG. ENGRG:	DATE		
APPROVED BY: <i>[Signature]</i>	DATE 8/6/90		
APPROVED BY:	DATE	UNLESS OTHERWISE SPECIFIED: TOLERANCES: DECIMALS: .XX ± .02 .XXX ± .010 ANGLES: ± 2°	
PROJECT NUMBER 91-011		MILLIMETERS ± 0.50 ± 0.25	SURFACE FINISH 125 MICRONS
		CA2222-08-()-()	
		FSC: 29372	SHEET 2 OF 2

REVISION 8/10/90 J. STAFFORD

SCANNED