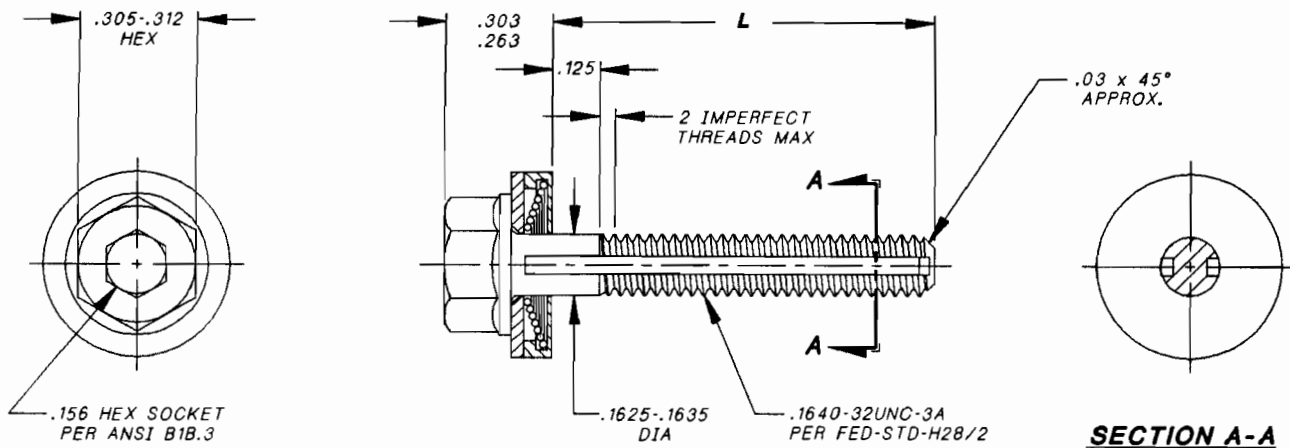
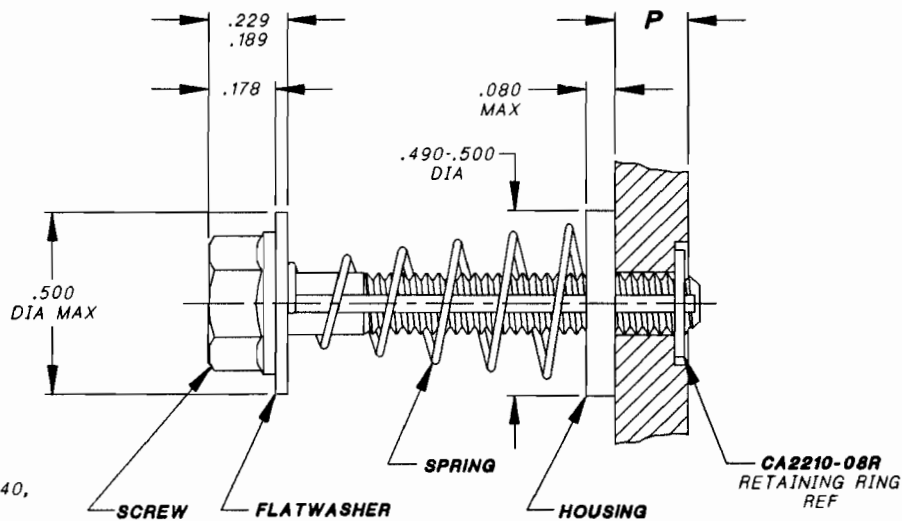


Voi-Shan • Tridair • Screwcorp



SCREW ASSEMBLY

()	L ±.020	P PANEL THICKNESS REF
-0825	.825	.250
-1000	1.000	.190

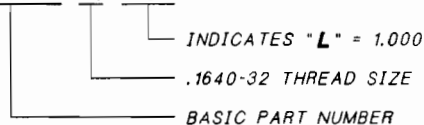


INSTALLED AND RETRACTED

NOTES, UNLESS OTHERWISE SPECIFIED:

1. MATERIAL:
 - 1.1 SCREW: 17-4PH CRES PER AMS5643.
 - 1.2 HOUSING: 300 SERIES CRES PER AMS5640, ASTM-A555 OR ASTM-A581.
 - 1.3 SPRING: 302 CRES PER ASTM-A313.
 - 1.4 FLATWASHER: 302 CRES PER AMS5516.
2. HEAT TREAT:
 - 2.1 SCREW: CONDITION H1025 PER MIL-H-6875. (155 KSI MINIMUM)
3. FINISH:
 - 3.1 PASSIVATE PER QQ-P-35.
4. SCREW ASSEMBLY IS DESIGNED TO BE USED WITH CA2210-08R RETAINING RING TO CAPTIVATE TO PANEL.
5. PANEL PREPARATION PER FAIRCHILD'S CAL-STD-0260.
6. INSTALLATION PROCEDURE PER FAIRCHILD'S SALES DRAWING NUMBER CA2210T-().
7. RECOMMENDED SEATING TORQUE: 21-32 IN/LBS.
8. TOLERANCES, UNLESS OTHERWISE SPECIFIED: .XX ±.02, .XXX ±.010, ANGLES ±2°. SURFACE FINISH 125 MICRONS.

10. PART NUMBER EXAMPLE:
CA22055-08-1000



INTERIM DOCUMENT REVISION		
Rev.	Date	DAF #
A1	10/21/10	94301

PROJECT NUMBER: 96-147

APPROVED DATE	29 JUL 96
REV. LETTER AND DATE	A 28 AUG 96
ECN NUMBER	ECN 39137

Fairchild AEROSPACE FASTENER DIVISION
ENGINEERING CENTER
 3000 WEST LOMITA BOULEVARD
 TORRANCE, CA 90505

CAGE CODE **29372**
 TRIDAIR PRODUCT

**CAPTIVE SCREW ASSEMBLY,
 SELF-RETRACTING, 'CRIMPRING' TYPE,
 17-4PH CRES, 155 KSI**

CA22055-08-()
 SHEET 1 OF 1

SCANNED