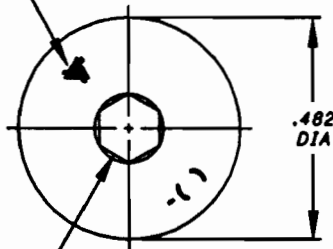
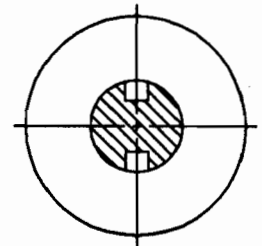
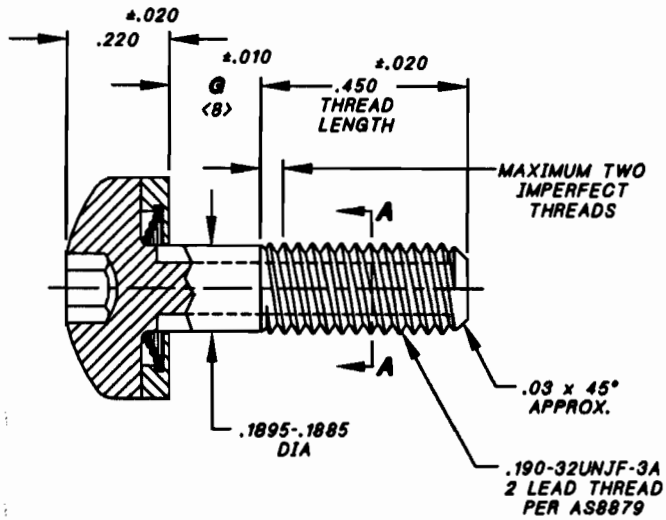


Vol-Shan · Tridair · Screwcorp

TRIDAIR LOGO & 2ND DASH NO,
INDICATING GRIP LENGTH "G"
STAMPED .010
MAXIMUM
DEPTH



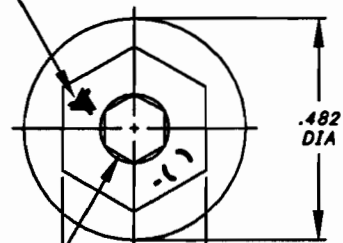
.125 HEX RECESS
PER ANSI B18.3



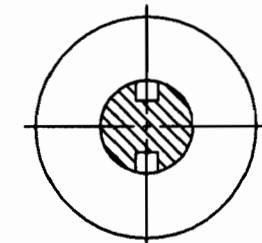
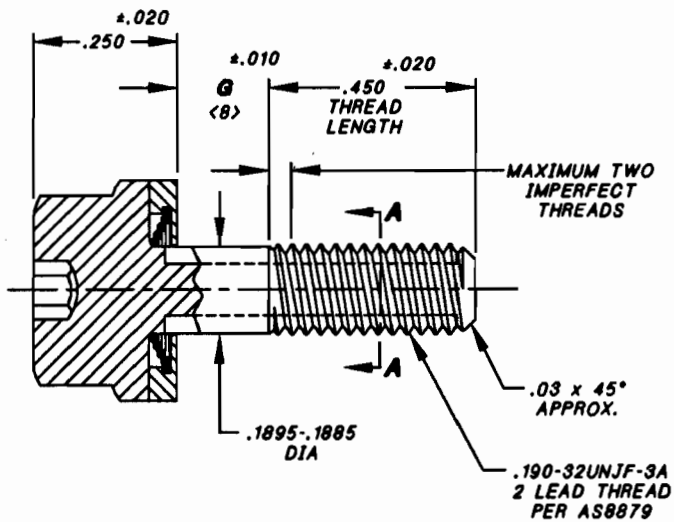
SECTION A-A

SCREW ASSEMBLY PAN HEAD STYLE <10>

TRIDAIR LOGO & 2ND DASH NO,
INDICATING GRIP LENGTH "G"
STAMPED .010
MAXIMUM
DEPTH



.125 HEX RECESS
PER ANSI B18.3



SECTION A-A

SCREW ASSEMBLY HEX HEAD STYLE <10>

FIGURE 1

PROJECT NUMBER: 96-086, 03-027

UNLESS OTHERWISE SPECIFIED:
TOLERANCE:
DECIMALS:
.XX ±.02
.XXX ±.010
ANGLE: ±2°

APPROVED DATE	20 DEC 95
REV. LETTER AND DATE	F 10 JAN 03
DAF NUMBER	94301

INTERIM DOCUMENT REVISION		
Rev.	Date	DAF #
F1	10/21/10	94301

Fairchild FAIRCHILD FASTENERS
ENGINEERING CENTER
3000 WEST LOMITA BOULEVARD
TORRANCE, CA 90505

CAGE CODE **29372**
TRIDAIR PRODUCT

CAPTIVE SCREW ASSEMBLY
SELF-RETRACTING "CRIMPING" TYPE,
#10-32 SIZE

CA22043-10-()()

SHEET 1 OF 2

SCANNED

Voi-Shan • Tridair • Screwcorp

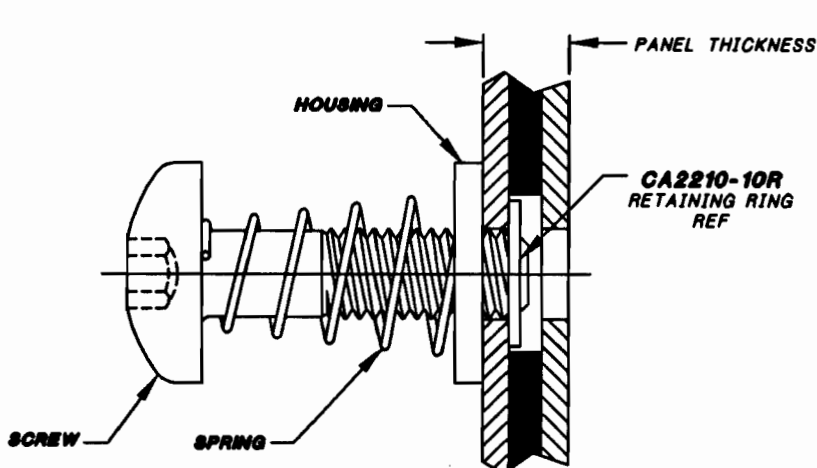


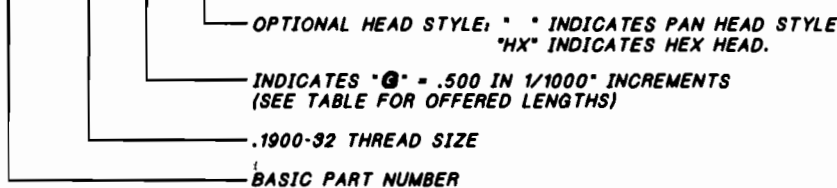
FIGURE 2 - INSTALLED & RETRACTED

SECOND DASH NUMBER	Q GRIP ±.010	SECOND DASH NUMBER	Q GRIP ±.010
-0020	.020	-0223	.223
-0040	.040	-0240	.240
-0060	.060	-0260	.260
-0080	.080	-0280	.280
-0100	.100	-0295	.295
-0120	.120	-0300	.300
-0140	.140	-0320	.320
-0150	.150	-0340	.340
-0160	.160	-0360	.360
-0165	.165	-0380	.380
-0180	.180	-0400	.400
-0186	.186	-0420	.420
-0190	.190	-0440	.440
-0200	.200	-0460	.460
-0205	.205	-0480	.480
-0220	.220	-0500	.500

NOTES, UNLESS OTHERWISE SPECIFIED:

1. MATERIAL:
 - 1.1 SCREW - A286 CRES PER AMS5731, AMS5732, AMS5734 OR AMS5737.
 - 1.2 HOUSING - 300 SERIES CRES PER AMS5640, ASTM-A555 OR ASTM-A581.
 - 1.3 SPRING - 302 CRES PER ASTM-A313.
2. HEAT TREAT:
 - 2.1 SCREW ONLY - 160,000 PSI MINIMUM TENSILE.
3. FINISH:
 - 3.1 PASSIVATED PER AMS-QQ-P-35.
4. RECOMMENDED SEATING TORQUE: 36-55 IN-LBS.
5. THIS SCREW ASSEMBLY IS DESIGNED TO BE USED WITH A CA2210-10R RETAINING RING TO CAPTIVATE TO PANEL.
6. PANEL PREPARATION REFER TO CAL-STD-0260.
7. REFER TO TRIDAIR DRAWING CA2210T-() FOR INSTALLATION PROCEDURE AND REQUIRED TOOL.
- 8) SCREW ASSEMBLY WITH "Q" LENGTH OVER .500 MAY NOT FULLY SELF-RETRACT.

(10) PART NUMBER EXAMPLE:
CA22043-10-Q500 HX



PROJECT NUMBER: 96-088, 03-027

UNLESS OTHERWISE SPECIFIED:

TOLERANCE:
DECIMALS:
.XX ±.02
.XXX ±.015
ANGLE: ±2°

APPROVED DATE
20 DEC 95
REV. LETTER AND DATE
F 10 JAN 03
DAF NUMBER
DAF 37031

Fairchild FAIRCHILD FASTENERS
ENGINEERING CENTER
 3000 WEST LOMITA BOULEVARD
 TORRANCE, CA 90505

SCANNED

CAPTIVE SCREW ASSEMBLY
SELF-RETRACTING "CRIMPRING" TYPE,
#10-32 SIZE

INTERIM DOCUMENT REVISION		
Rev.	Date	DAF #
F1	10/21/10	94301

CAGE CODE **29372**
 TRIDAIR PRODUCT

CA22043-10-() ()
 SHEET 2 OF 2