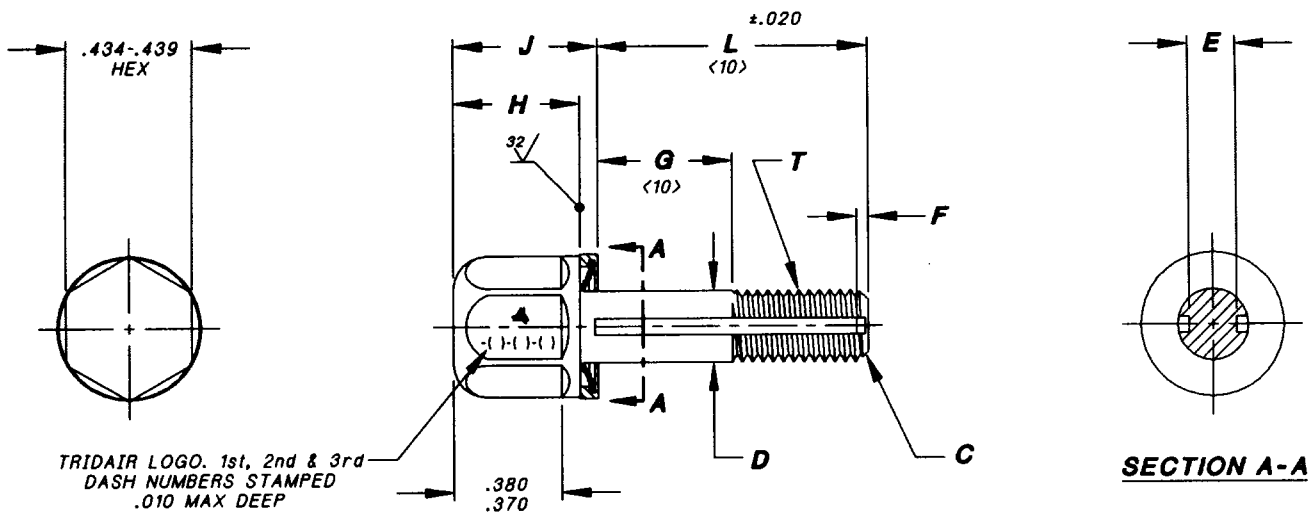
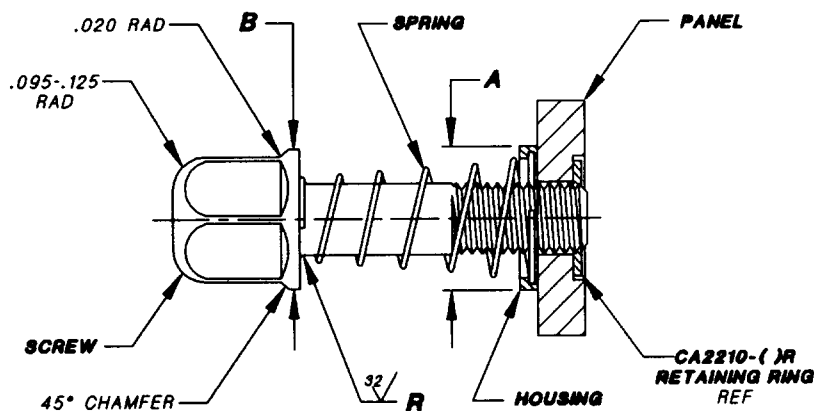


Vol-Shan · Tridair · Screwcorp



SCREW ASSEMBLY



INSTALLED AND RETRACTED

NOMINAL THREAD SIZE	T THREAD PER FED-STD-H28/2	A DIA	B DIA	C x 45° APPROX	D DIA	E MIN	F	H	J ± .020	R ± .005	TENSILE STRENGTH LBS. MIN. <11>	SHEAR STRENGTH LBS. MIN. <11>
10	.1900-32UNF-3A	.480	.491 .486	.030	.1895 .1885	.108	.040	.440	.502	.015	2,425	1,450
4	.2500-28UNF-3A	.500	.491 .486	.035	.2495 .2485	.162	.040	.440	.502	.015	4,625	2,775

PROJECT NUMBER: 95-130 AND 96-170

UNLESS OTHERWISE SPECIFIED:	
TOLERANCE: DECIMALS:	
.XX	±.02
.XXX	±.010
ANGLE: ±2°	
APPROVED DATE	
19 JUN 95	U.S.
REV. LETTER AND DATE	
C	20 APR 00
DAF NUMBER	
DAF 47588	

Fairchild FAIRCHILD FASTENERS
ENGINEERING CENTER
 3000 WEST LOMITA BOULEVARD
 TORRANCE, CA 90505

CAGE CODE **29372**
 TRIDAIR PRODUCT

**CAPTIVE SCREW ASSEMBLY,
 SELF-RETRACTING, "CRIMPRING" TYPE,
 EVA HEX HEAD, CRES, 180 KSI**

CA22036

SHEET 1 OF 2

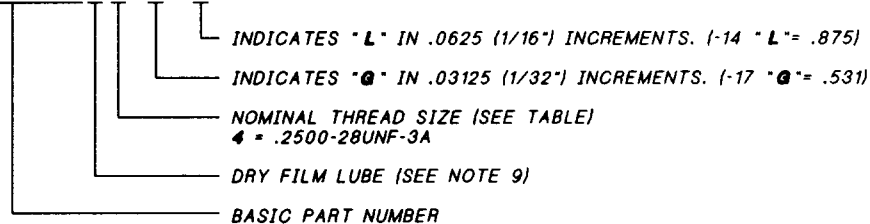
Vol-Shan · Tridair · Screwcorp

NOTES, UNLESS OTHERWISE SPECIFIED:

1. MATERIAL:
 - 1.1 SCREW: A286 CRES PER AMS5731.
 - 1.2 HOUSING: 300 SERIES CRES PER AMS5640, ASTM-A555 OR ASTM-A581.
 - 1.3 SPRING: 302 CRES PER ASTM-A313.
2. HEAT TREAT:
 - 2.1 SCREW: 160 KSI MINIMUM TENSILE.
3. FINISH:
 - 3.1 PASSIVATE PER AMS-QQ-P-35 DESIGNATED BY ONE DASH "-".
 - 3.2 DRY FILM LUBE PER AS5272, TYPE 1, DESIGNATED BY LETTER "D". (SEE NOTE 9)
4. SCREW ASSEMBLIES ARE DESIGNED TO BE USED WITH CA2210-() RETAINING RING TO CAPTIVATE TO PANEL.
5. PANEL PREPARATION PER FAIRCHILD'S CAL-STD-0260.
6. INSTALLATION PROCEDURE PER FAIRCHILD'S SALES DRAWING NUMBER CA2210T-().
7. SCREW ASSEMBLIES WITH "L" LENGTHS OVER 1.000 MAY NOT FULLY SELF-RETRACT.
8. SURFACE FINISH 125 MICROINCHES UNLESS OTHERWISE SPECIFIED.
9. FOR "D" CODE PARTS WITH DRY FILM LUBE FINISH, DIMENSIONS APPLY BEFORE APPLICATION OF DRY FILM LUBE.

<10> PART NUMBER EXAMPLE:

CA22036D4-17-14



<11> TENSILE AND SHEAR STRENGTHS ARE CALCULATED VALUES.

STARTED PROJECT NUMBER: 95-130 AND 96-170

UNLESS OTHERWISE SPECIFIED:	
TOLERANCE:	
DECIMALS:	
.XX	± .02
.XXX	± .010
ANGLE:	± 2°
APPROVED DATE	
19 JUN 95	u.s.
REV. LETTER AND DATE	
C	20 APR 00
DAF NUMBER	
DAF 47588	

Fairchild FAIRCHILD FASTENERS
 ENGINEERING CENTER
 3000 WEST LOMITA BOULEVARD
 TORRANCE, CA 90505

CAGE CODE **29372**
 TRIDAIR PRODUCT

**CAPTIVE SCREW ASSEMBLY,
 SELF-RETRACTING, "CRIMPRING" TYPE,
 EVA HEX HEAD, CRES, 160 KSI**

CA22036