

Voi-Shan • Tridair • Screwcorp

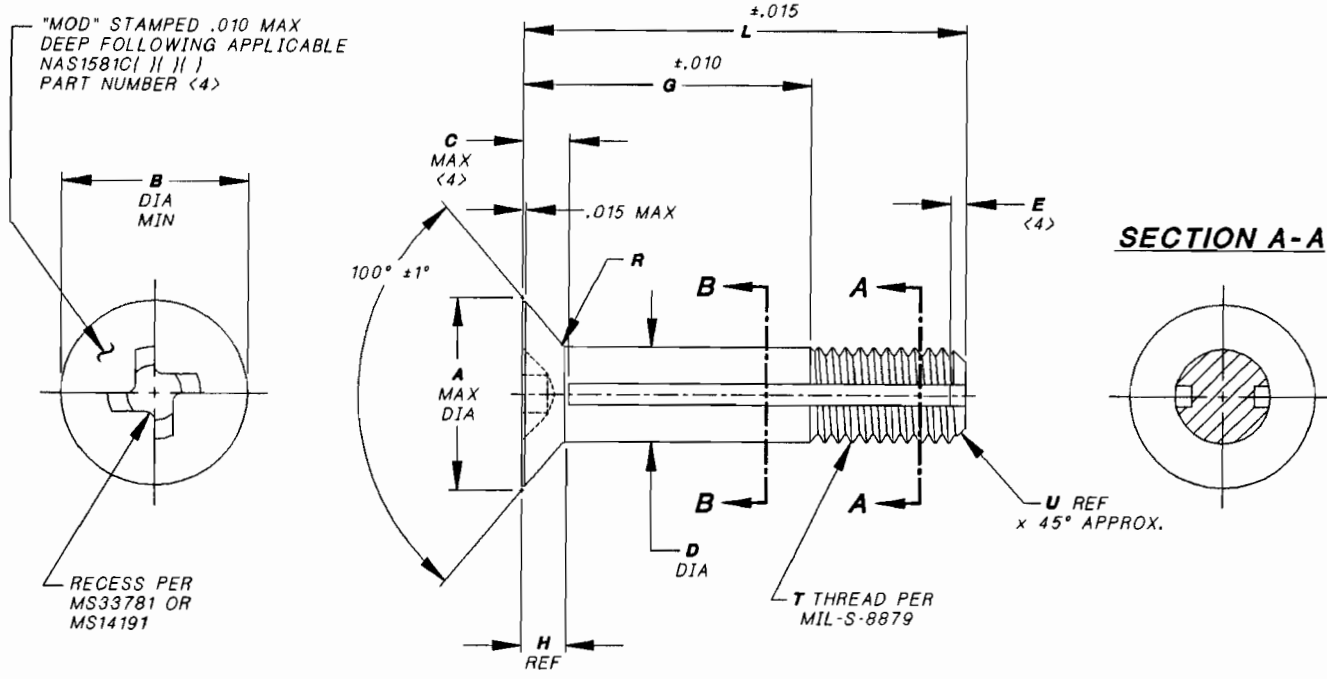


TABLE 1

FIRST DASH NUMBER	T THREAD UNJF-3A	A DIA MAX	B DIA MIN	C MAX	D DIA	E ±.010	H REF	R RAD	U REF
-10	.1900-32	.3047	.2578	.075	.1895 .1890	.040	.049	.020 .010	.050
-4	.2500-28	.3988	.3504	.115	.2495 .2490	.040	.063	.020 .010	.050
-5	.3125-24	.4787	.4289	.120	.3120 .3115	.050	.070	.025 .010	.060
-6	.3750-24	.5662	.5149	.130	.3745 .3740	.050	.081	.030 .015	.060

FIRST DASH NUMBER	T THREAD UNJF-3A	TENSILE STRENGTH LBS MIN (CALCULATED) <4>	SINGLE SHEAR STRENGTH LBS MIN (CALCULATED ACROSS B-B) <4>	RECOMMENDED SEATING TORQUE INCH-LBS <4>
-10	.1900-32	2,000	1,950	37-57
-4	.2500-28	3,700	3,550	50-98
-5	.3125-24	5,000	5,650	125-225
-6	.3750-24	7,200	8,300	250-420

PROJECT NUMBER: 92-165

UNLESS OTHERWISE SPECIFIED:
TOLERANCE:
DECIMALS:
.XX ±.02
.XXX ±.010
ANGLE: ±2°

APPROVED DATE
17 NOV 93

REV. LETTER AND DATE
A 27 APR 93

DAF NUMBER
DAF 44300

INTERIM DOCUMENT REVISION		
Rev.	Date	DAF #
A1	10/21/10	94301

Fairchild FAIRCHILD FASTENERS
ENGINEERING CENTER
3000 WEST LOMITA BOULEVARD
TORRANCE, CA 90505

CAGE CODE **29372**
TRIDAIR PRODUCT

SCREW, CAPTIVE, MODIFIED
NAS1581C() () , #10-32,
#1/4-28, #5/16-24 AND #3/8-24 SIZES

CA22006-()-()
SHEET 1 OF 2

SCANNED

Voi-Shan • Tridair • Screwcorp

NOTES:

1. MATERIAL: A286 CRES PER AMS5731, AMS5732, AMS5737 OR AMS5853.
2. HEAT TREAT: AS REQUIRED TO MEET STATED STRENGTH REQUIREMENTS.
3. FINISH: PASSIVATED PER AMS-OQ-P-35.
- <4> NAS1581C() () ARE MODIFIED BY ADDING LONGITUDINAL SLOTS AND "MOD" TO THE HEAD MARKING. TENSILE AND SHEAR STRENGTHS AND RECOMMENDED SEATING TORQUES ARE ADJUSTED USING REDUCED CROSS SECTIONAL AREAS RESULTING FROM THE SLOTTING MODIFICATION. SEE NAS1581 SPECIFICATION FOR DATA NOT SHOWN HEREIN.
5. SCREWS ARE TO BE USED WITH CA2210-1 JR RETAINING RINGS TO CAPTIVATE TO PANEL.
6. PANEL PREPARATION: REFER TO CAL-STD-0260 DRAWING.
7. INSTALLATION: REFER TO CA2210T-1) DRAWING.

9. PART CALLOUT EXAMPLE:

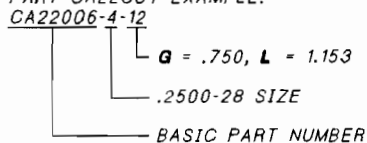


TABLE 2

SECOND DASH NUMBER	g ±.010	L ±.015			
		CA22006-10	CA22006-4	CA22006-5	CA22006-6
2	0.125	0.487	0.528		
3	0.187	0.549	0.590		
4	0.250	0.613	0.653	0.751	0.844
5	0.312	0.675	0.715	0.813	0.906
6	0.375	0.738	0.778	0.876	0.969
7	0.438	0.801	0.841	0.939	1.032
8	0.500	0.863	0.903	1.001	1.094
9	0.562	0.925	0.965	1.063	1.156
10	0.625	0.988	1.028	1.126	1.219
11	0.688	1.051	1.091	1.189	1.282
12	0.750	1.113	1.153	1.251	1.344
13	0.812	1.175	1.215	1.313	1.406
14	0.875	1.238	1.278	1.376	1.496
15	0.938	1.301	1.341	1.439	1.532
16	1.000	1.363	1.403	1.501	1.594
17	1.062	1.425	1.465	1.563	1.656
18	1.125	1.488	1.528	1.626	1.719
19	1.188	1.551	1.591	1.689	1.782
20	1.250	1.613	1.653	1.751	1.844
21	1.312	1.675	1.715	1.813	1.906
22	1.375	1.738	1.778	1.876	1.969
23	1.438	1.801	1.841	1.939	2.032
24	1.500	1.863	1.903	2.001	2.094
25	1.562	1.925	1.965	2.063	2.156
26	1.625	1.988	2.028	2.126	2.219
27	1.688	2.051	2.091	2.189	2.282
28	1.750	2.113	2.153	2.251	2.344

INTERIM DOCUMENT REVISION		
Rev.	Date	DAF #
A1	10/21/10	94 301

UNLESS OTHERWISE SPECIFIED:
 TOLERANCE:
 DECIMALS:
 .XX ±.02
 .XXX ±.010
 ANGLE: ±2°

APPROVED DATE

17 NOV 93

REV. LETTER AND DATE

A 27 APR 93

DAF NUMBER

DAF 44300

Fairchild FAIRCHILD FASTENERS
 ENGINEERING CENTER
 3000 WEST LOMITA BOULEVARD
 TORRANCE, CA 90505

CAGE CODE **29372**
 TRIDAIR PRODUCT

SCREW, CAPTIVE, MODIFIED
 NAS1581C() (), #10-32,
 #1/4-28, #5/16-24 AND #3/8-24 SIZES

CA22006-(-)-(-)

SHEET 2 OF 2

PROJECT NUMBER: 92-165