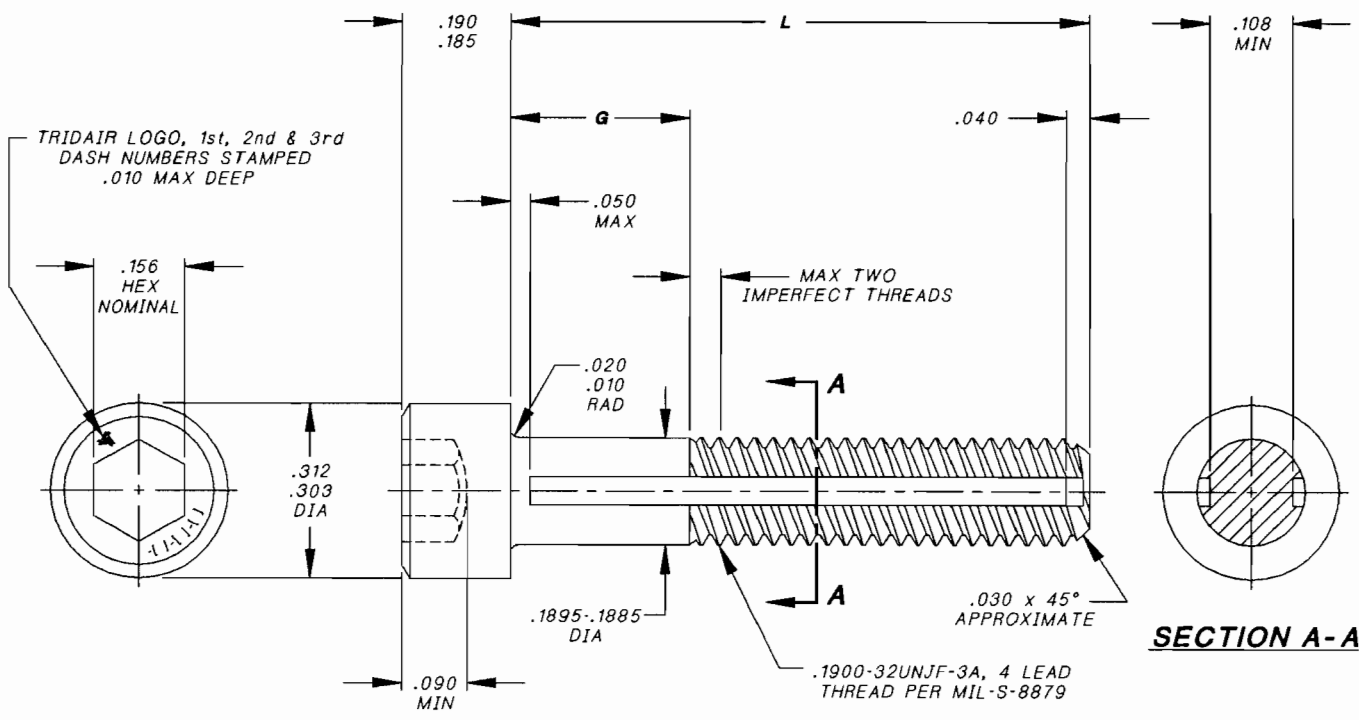
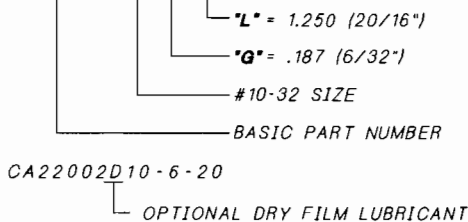


Voi-Shan • Tridair • Screwcorp



NOTES:

- 1. MATERIAL: A-286 CRES PER AMS5731, AMS5732, AMS5737.
- 2. HEAT TREAT: PER AMS5737, AGE ONLY, TO ACHIEVE 160,000 PSI MINIMUM TENSILE.
- 3. FINISH: STANDARD - PASSIVATE PER QQ-P-35.  
 OPTIONAL - DRY FILM LUBRICANT PER MIL-L-46010, TYPE 1 (IAW BOEING MUA NUMBER 1001-0036) DESIGNATED BY LETTER "D" IN LIEU OF 1st DASH.
- 4. HEAD: HEX SOCKET HEAD CAP SCREW PER ANSI B18.3, PLAIN, NOT KNURLED.
- 5. SCREW TO BE USED WITH CA2210-10R RETAINING RING TO CAPTIVATE TO PANEL.
- 6. PANEL PREPARATION: REFER TO CAL-STD-0260 DRAWING.
- 7. INSTALLATION: REFER TO TRIDAIR DRAWING NUMBER CA2210T-() .
- 8. PART NUMBER EXAMPLE:  
 CA22002-10-6-20



INTERIM DOCUMENT REVISION		
Rev.	Date	DAF #
1/2/10	10/21/10	94301

10. TOLERANCES, UNLESS OTHERWISE INDICATED, DECIMALS: .XX ±.02, .XXX ±.010 ANGLES: ±2°.

PROJECT NUMBER: 94-013

APPROVED DATE	28 OCT 93
REV. LETTER AND DATE	<del>28 OCT 93</del>
ECN NUMBER	<del>ECN 34475</del>

**Fairchild AEROSPACE FASTENER DIVISION**  
**ENGINEERING CENTER**  
 3010 WEST LOMITA BOULEVARD  
 TORRANCE, CA 90505

CAGE CODE **92215**  
 TRIDAIR PRODUCT

**SCREW, SOCKET HEAD,  
 CAPTIVE, CRES,  
 #10-32 QUAD LEAD THREAD**

**CA22002-10-()-()**

SHEET 1 OF 2

SCANNED

NOTES CONTINUED:

- 11. QUALITY CONFORMANCE INSPECTION SHALL BE PER FF-S-86E, PARA. 4, WITH THE FOLLOWING EXCEPTIONS:
  - 11.1 HARDNESS TESTING PER PARA. 4.3.1.1 SHALL CONFIRM Rc 36 MINIMUM WITHOUT A MAXIMUM LIMIT.
  - 11.2 TENSION TESTING TO BE LIMITED TO AXIAL ONLY PER PARA. 4.3.1.2 EXCEPT TEST PER MIL-STD-1312-8. MINIMUM ULTIMATE TENSILE STRENGTH SHALL BE 2,425 LBS.
  - 11.3 DISCONTINUITY INSPECTION TEST SHALL BE PER MIL-I-6866 PENETRANT INSPECTION FOR ALL SIZES.
  - 11.4 SHEAR TESTING IS REQUIRED. TEST PER MIL-STD-1312-4. APPLY LOAD ACROSS SLOTS. MINIMUM ULTIMATE SHEAR STRENGTH SHALL BE 1,450 LBS.
    - 11.4.1 PREPARE SHEAR TEST PLATES WITH SCREW HOLES PER CAL-STD-0260. COUNTERBORE TOP PLATE ONLY. COUNTERBORE TO FACE AWAY FROM SCREW HEAD DURING SHEAR TEST.
    - 11.4.2 SAMPLING FOR SHEAR TESTING SHALL BE PER FF-S-86E, PARA. 4.2.3 OR 4.2.7, AS APPLICABLE.
- 12. PACKAGING:
  - 12.1 PACKAGE PER ASTM-D3951.
  - 12.2 CONTAINER MARKING PER FED-STD-123.
- 13. RECOMMENDED SEATING TORQUE: 37 TO 57 INCH-LBS.

	G GRIP									L LENGTH
	.062	.094	.125	.156	.187	.218	.250	.281	.312	
-2-7	-3-7	-4-7	-5-7	-6-7	-7-7	-8-7	-9-7	-10-7	.437	
-2-8	-3-8	-4-8	-5-8	-6-8	-7-8	-8-8	-9-8	-10-8	.500	
-2-9	-3-9	-4-9	-5-9	-6-9	-7-9	-8-9	-9-9	-10-9	.562	
-2-10	-3-10	-4-10	-5-10	-6-10	-7-10	-8-10	-9-10	-10-10	.625	
-2-11	-3-11	-4-11	-5-11	-6-11	-7-11	-8-11	-9-11	-10-11	.687	
-2-12	-3-12	-4-12	-5-12	-6-12	-7-12	-8-12	-9-12	-10-12	.750	
-2-13	-3-13	-4-13	-5-13	-6-13	-7-13	-8-13	-9-13	-10-13	.812	
-2-14	-3-14	-4-14	-5-14	-6-14	-7-14	-8-14	-9-14	-10-14	.875	
-2-15	-3-15	-4-15	-5-15	-6-15	-7-15	-8-15	-9-15	-10-15	.937	
-2-16	-3-16	-4-16	-5-16	-6-16	-7-16	-8-16	-9-16	-10-16	1.000	
-2-17	-3-17	-4-17	-5-17	-6-17	-7-17	-8-17	-9-17	-10-17	1.062	
-2-18	-3-18	-4-18	-5-18	-6-18	-7-18	-8-18	-9-18	-10-18	1.125	
-2-19	-3-19	-4-19	-5-19	-6-19	-7-19	-8-19	-9-19	-10-19	1.187	
-2-20	-3-20	-4-20	-5-20	-6-20	-7-20	-8-20	-9-20	-10-20	1.250	
-2-21	-3-21	-4-21	-5-21	-6-21	-7-21	-8-21	-9-21	-10-21	1.312	
-2-22	-3-22	-4-22	-5-22	-6-22	-7-22	-8-22	-9-22	-10-22	1.375	
-2-23	-3-23	-4-23	-5-23	-6-23	-7-23	-8-23	-9-23	-10-23	1.437	
-2-24	-3-24	-4-24	-5-24	-6-24	-7-24	-8-24	-9-24	-10-24	1.500	
-2-25	-3-25	-4-25	-5-25	-6-25	-7-25	-8-25	-9-25	-10-25	1.562	
-2-26	-3-26	-4-26	-5-26	-6-26	-7-26	-8-26	-9-26	-10-26	1.625	
-2-27	-3-27	-4-27	-5-27	-6-27	-7-27	-8-27	-9-27	-10-27	1.687	
-2-28	-3-28	-4-28	-5-28	-6-28	-7-28	-8-28	-9-28	-10-28	1.750	

.190-32 SIZE FIRST DASH NUMBER - 10

INTERIM DOCUMENT REVISION	
Rev.	DAF #
N/A	94301
Date	
10/21/10	

S13428 PROJECT NUMBER: 94-013

APPROVED DATE
28 OCT 93
REV. LETTER AND DATE
<del>28 OCT 93</del>
ECN NUMBER
<del>ECN 34473</del>

**Fairchild** AEROSPACE FASTENER DIVISION  
**ENGINEERING CENTER**  
 3010 WEST LOMITA BOULEVARD  
 TORRANCE, CA 90505

CAGE CODE **92215**  
 TRIDAIR PRODUCT

**SCREW, SOCKET HEAD,  
 CAPTIVE, CRES,  
 #10-32 QUAD LEAD THREAD**

**CA22002-10-()-()**

SCANNED