

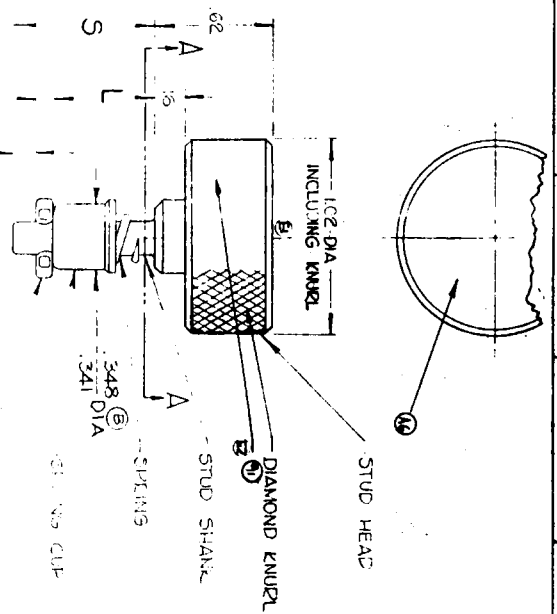
TABLE I

| CATALOG NO. | L | S | WT. LBS PER 100 |
|-------------|-------------|-----|-----------------|
| 40583-1 | .358 - .384 | .56 | 11.34 |
| 2 | .428 - .413 | .59 | 11.37 |
| 3 | .488 - .443 | .62 | 11.44 |
| 4 | .488 - .473 | .65 | 11.45 |
| 5 | .548 - .533 | .68 | 11.50 |
| 6 | .548 - .563 | .71 | 11.56 |
| 7 | .578 - .563 | .74 | 11.61 |
| 8 | .608 - .593 | .77 | 11.67 |
| 9 | .638 - .623 | .80 | 11.61 |
| 10 | .668 - .653 | .83 | 11.90 |
| 11 | .698 - .683 | .86 | 11.97 |
| 12 | .728 - .713 | .89 | 12.05 |
| 13 | .758 - .743 | .92 | 12.12 |
| 14 | .788 - .773 | .95 | 12.20 |
| | | .98 | 12.27 |

| SUFFIX | HEAD | STUD | SHANK | SPRINGS | SPRING CUP | CROSS PIN | FINISH |
|--------|---|------------------------------------|---|--|---|---|--------|
| None | STEEL, CEE PER QQ-5-703, CLASS 509, AMS 5643, 17-4PH | WIRE: CRES PER AMS 5643, 17-4PH | WIRE: STEEL, CEE PER ASTM A 313 300 SERIES | STEEL, CEE PER QQ-5-763, CLASS 303 | WIRE: STEEL, CEE PER ASTM A 313 500 SERIES | PASSIVATED | |
| A | STEEL CARBON PER QQ-5-633, FS B III, ASTM A 331/FS 4037 | STEEL ALLOY PER ASTM A 331/FS 4037 | WIRE: STEEL, SPRING PER ASTM A 228 (MUSIC WIRE) | STEEL CARBON/STAINLESS PER QQ-5-763, CLASS 303 | WIRE: STEEL, SPRING PER ASTM A 228 (MUSIC WIRE) | CAD PLATE PER QQ-P-416, CLASS 2, TYPE I | |
| B | STEEL CARBON PER QQ-5-633, FS B III, ASTM A 331/FS 4037 | STEEL ALLOY PER ASTM A 331/FS 4037 | WIRE: STEEL, SPRING PER ASTM A 228 (MUSIC WIRE) | STEEL CARBON/STAINLESS PER QQ-5-763, CLASS 303 | WIRE: STEEL, SPRING PER ASTM A 228 (MUSIC WIRE) | SEE NOTE 3 | |
| C | STEEL CARBON PER QQ-5-633, FS B III, ASTM A 331/FS 4037 | STEEL ALLOY PER ASTM A 331/FS 4037 | WIRE: STEEL, SPRING PER ASTM A 228 (MUSIC WIRE) | STEEL CARBON/STAINLESS PER QQ-5-763, CLASS 303 | WIRE: STEEL, SPRING PER ASTM A 228 (MUSIC WIRE) | SEE NOTE 3 | |
| D | STEEL CARBON PER QQ-5-633, FS B III, ASTM A 106 | STEEL ALLOY PER ASTM A 331/FS 4037 | WIRE: STEEL, SPRING PER ASTM A 228 (MUSIC WIRE) | STEEL CARBON/STAINLESS PER QQ-5-763, CLASS 303 | WIRE: STEEL, SPRING PER ASTM A 228 (MUSIC WIRE) | SEE NOTE 3 | |

TABLE II

| REV. | CHANGE |
|------|--|
| 1 | REVISION A & E PART 'A' WAS 25TH & ADDED SUFFIX 'B' INFO. (REMOVED) (SEE TABLE I) TO INCLUDE INFO. OF STUD HEAD. |
| 2 | REVISION B - 344 DIA. (2) ADDED INFO. (9) WAS 'STEEL, CEE PER QQ-5-423 FS 302' (10) WAS 'QQ-5-00640 FS 1009 OR 1015' (11) WAS 'J.K.M.' (12) WAS 'CARBON 1116J J.K.M.' (13) WAS 'DINGER 8-3-11' (14) WAS 'RELOCATED INFO TO NOTE 3' |
| 3 | REVISION C - 344 DIA. (2) ADDED INFO. (9) WAS 'STEEL, CEE PER QQ-5-423 FS 302' (10) WAS 'QQ-5-00640 FS 1009 OR 1015' (11) WAS 'J.K.M.' (12) WAS 'DINGER 8-3-11' (14) WAS 'RELOCATED INFO TO NOTE 3' |
| 4 | REVISION D - 344 DIA. (2) ADDED INFO. (9) WAS 'STEEL, CEE PER QQ-5-423 FS 302' (10) WAS 'QQ-5-00640 FS 1009 OR 1015' (11) WAS 'J.K.M.' (12) WAS 'DINGER 8-3-11' (14) WAS 'RELOCATED INFO TO NOTE 3' |
| 5 | REVISION E - 344 DIA. (2) ADDED INFO. (9) WAS 'STEEL, CEE PER QQ-5-423 FS 302' (10) WAS 'QQ-5-00640 FS 1009 OR 1015' (11) WAS 'J.K.M.' (12) WAS 'DINGER 8-3-11' (14) WAS 'RELOCATED INFO TO NOTE 3' |
| 6 | REVISION F - 344 DIA. (2) ADDED INFO. (9) WAS 'STEEL, CEE PER QQ-5-423 FS 302' (10) WAS 'QQ-5-00640 FS 1009 OR 1015' (11) WAS 'J.K.M.' (12) WAS 'DINGER 8-3-11' (14) WAS 'RELOCATED INFO TO NOTE 3' |
| 7 | REVISION G - 344 DIA. (2) ADDED INFO. (9) WAS 'STEEL, CEE PER QQ-5-423 FS 302' (10) WAS 'QQ-5-00640 FS 1009 OR 1015' (11) WAS 'J.K.M.' (12) WAS 'DINGER 8-3-11' (14) WAS 'RELOCATED INFO TO NOTE 3' |
| 8 | REVISION H - 344 DIA. (2) ADDED INFO. (9) WAS 'STEEL, CEE PER QQ-5-423 FS 302' (10) WAS 'QQ-5-00640 FS 1009 OR 1015' (11) WAS 'J.K.M.' (12) WAS 'DINGER 8-3-11' (14) WAS 'RELOCATED INFO TO NOTE 3' |



NOTE: THIS DIMENSION IS .371 FOR -1 ONLY.

CAMLOC & CATALOG PART NO. HERE AS SHOWN.

1. CARBONUM PLATED PER QQ-C-320, CLASS 1, TYPE I, EXCEPT SPRING & CROSS PIN; CAD PLATED PER QQ-P-416, CLASS 2, TYPE II, EXCEPT SPRING CUP; CADMIUM PLATED PER QQ-P-416, CLASS 2, WITH CLEAR CHROMATE.
2. THE CROSS PIN OF STUD ASSEMBLIES WITH NO SUFFIX WILL WITHSTAND 50 LB PUSHOUT FORCE. THE CROSS PIN OF STUD ASSEMBLIES WITH SUFFIX 'A' SUFFIX 'B' OR 'C' OF STUD WITHIN ±.02.
3. FOR STUD SELECTION & INSTALLATION DATA, SEE CAMLOC CATALOG, 4002 SERIES. SAME AS FOR 4002 TYPE STUD ASSY.

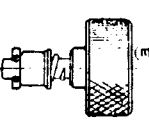
| PROPERTY | VALUE |
|---------------------|--------------|
| MECHANICAL PROPERTY | SEE TABLE II |
| FINISH | SEE TABLE II |
| WARRANTY | SEE TABLE II |

| PROPERTY | VALUE |
|---------------------|--------------|
| MECHANICAL PROPERTY | SEE TABLE II |
| FINISH | SEE TABLE II |
| WARRANTY | SEE TABLE II |

Camloc
 Camloc Fastener Corporation
 Parsippany, New Jersey

STUD ASSY - ROUNDED CYLINDRICAL HEAD

40583 H



ACTUAL SIZE
 (40583-6)