

MANUFACTURE OF THE PROPRIETARY PARTS SHOWN HERE WITHOUT WRITTEN CONSENT IS ABSOLUTELY PROHIBITED

THIS DRAWING EMBODIES A CONFIDENTIAL PROPRIETARY DESIGN & ALL DESIGN, MANUFACTURING PRODUCTION, USE & SALE RIGHTS REGARDING SAME ARE EXPRESSLY RESERVED.

TABLE 1

DASH NUMBER	L	S	WEIGHT LBS/100
1	.393 .383	.66	.869
2	.423 .413	.69	.887
3	.453 .443	.72	.969
4	.483 .473	.75	.988
5	.513 .503	.78	1.05
6	.543 .533	.81	1.12
7	.573 .563	.84	1.18
8	.603 .593	.87	1.30
9	.633 .623	.90	1.37
10	.663 .653	.93	1.44
11	.693 .683	.96	1.52
12	.723 .713	.99	1.60
13	.753 .743	1.02	1.67
14	.783 .773	1.05	1.74
15	.813 .803	1.08	1.82

FOR -16 AND LONGER USE:
 L MIN = .553 + (.030 x DASH NO.)
 L MAX = L MIN + .010
 S = .63 + (.03 x DASH NO.)
 WT-LBS/100 = .847 + (.0193 x DASH NO.)

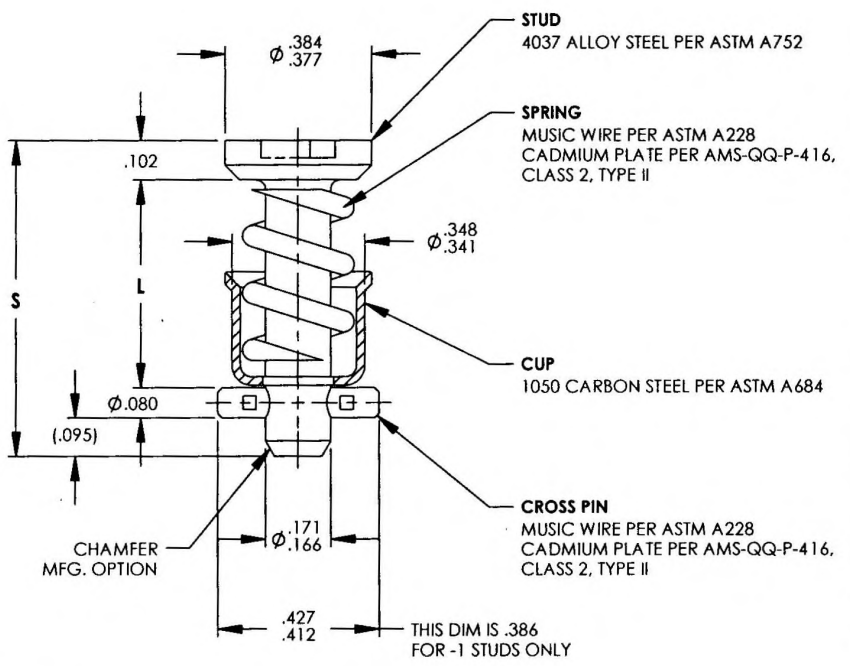
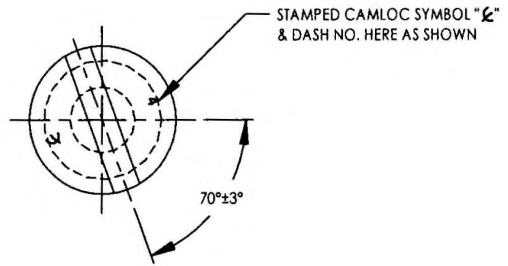


TABLE 2

DASH	FINISH
NONE	NICKEL PLATE PER AMS-QQ-N-290, CLASS 1, TYPE IV (SEMI-BRIGHT FINISH)
A	CADMIUM PLATE PER AMS-QQ-P-416, CLASS 2, TYPE II, DYED BLACK-SATIN BLACK SYNTHETIC, ENAMEL ON VISIBLE SURFACES

NOTES: UNLESS OTHERWISE SPECIFIED.

- CROSS PIN WILL WITHSTAND 175 lbs. PUSHOUT FORCE & RETAIN SYMMETRY ABOUT CENTERLINE OF STUD WITHIN $\pm .02$.
- FOR STUD SECTION AND INSTALLATION DATA, SEE CAMLOC CATALOG 4002 SERIES.
- HEAT TREATMENT:
STUD: HARDENED

INTERIM DOCUMENT REVISION		
Rev.	Date	DAF#
F1	10/8/2018	117431

SCANNED

APPROVED DATE
25 JUL 01

REV LETTER AND DATE
F 24 AUG 09

DAF NUMBER
89475

ARCONIC
 Arconic Fastening Systems
CAMLOC PRODUCTS
 3012 W. LOMITA BLVD.
 TORRANCE, CA 90505

TITLE:
**STUD ASSEMBLY
 SLOTTED HEAD**

UNLESS OTHERWISE SPECIFIED
 DIMENSIONS ARE IN INCHES &
 ASME Y14.5M TOLERANCES:

ANGLES = $\pm 1^\circ$
 FRACTIONS = $\pm 1/32$
 DECIMALS .XX = $\pm .02$
 .XXX = $\pm .010$

CURRENT DESIGN ACTIVITY:
CAGE CODE: 71286
SALES DRAWING NO.

40S79

SHEET 1 OF 1

S44839