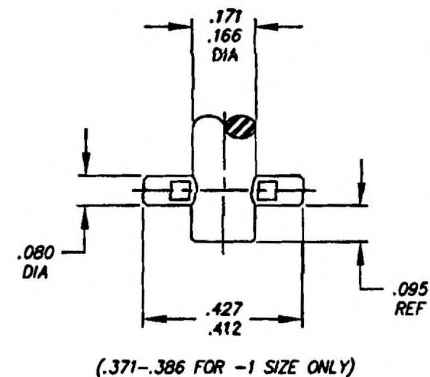
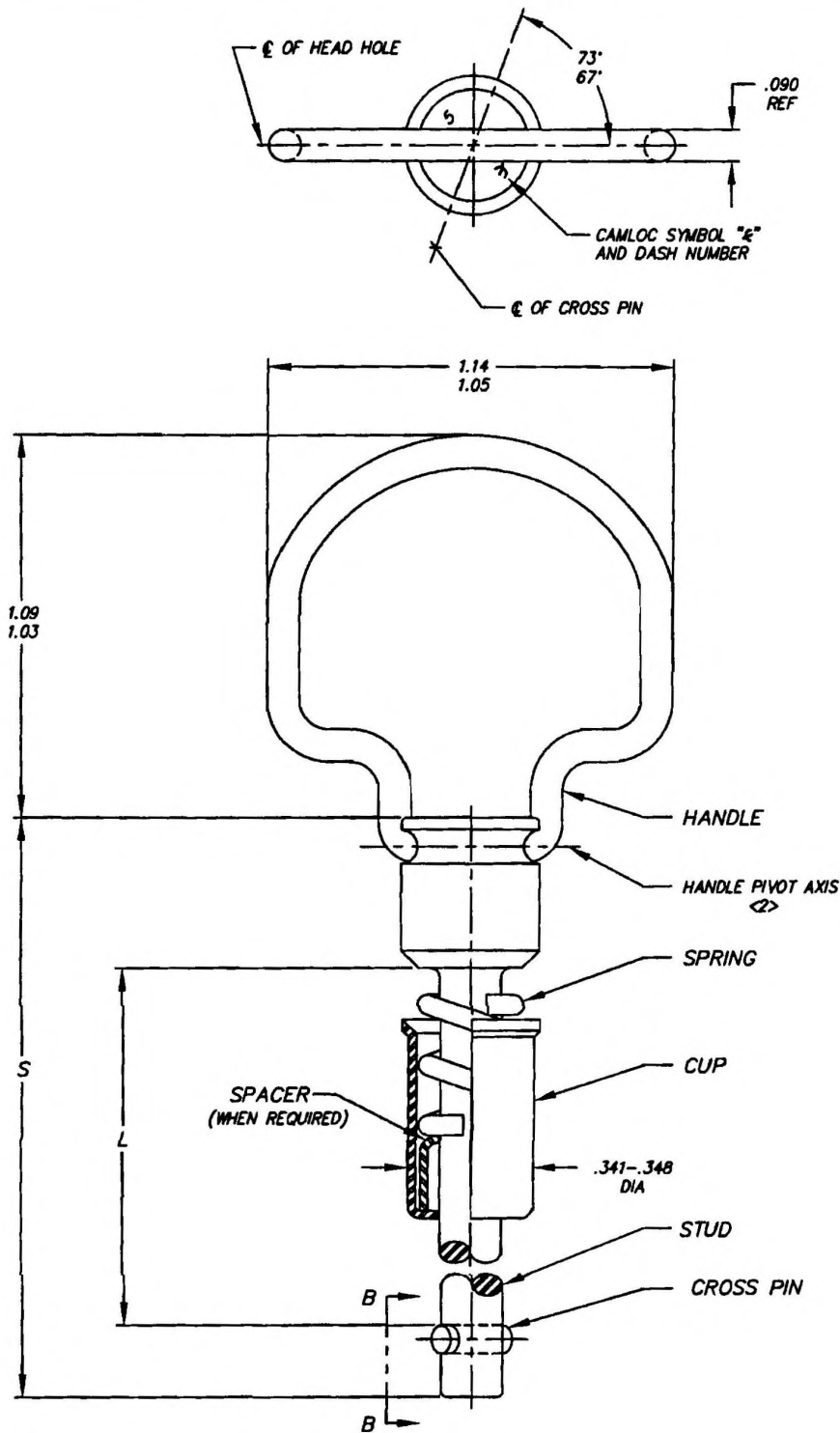


Camloc . Delron . Deutsch . Huck . K-Fast . Kaynar . Microdot . RAM . Rosan . Screwcorp . Tridair . Voi-Shan

MANUFACTURE OF THE PROPRIETARY PARTS SHOWN HERE WITHOUT WRITTEN CONSENT IS ABSOLUTELY PROHIBITED

THIS DRAWING EMPLOYS A CONFIDENTIAL, PROPRIETARY DESIGN & ALL DESIGN, MANUFACTURING PRODUCTION, USE & SALE RIGHTS REGARDING SAME ARE EXPRESSLY RESERVED.




VIEW B-B
ROTATED FOR CLARIFICATION

NOTES: UNLESS OTHERWISE SPECIFIED.

1. FOR STUD SELECTION AND INSTALLATION DATA, SEE CAMLOC CATALOG 4002 SERIES.
2. HANDLE CAN SNAP DOWN (ABOUT HANDLE PIVOT AXIS) 90° IN EITHER DIRECTION FROM POSITION SHOWN.
3. CROSS PIN WILL WITHSTAND A PUSHOUT FORCE OF 100 LBS. AND RETAIN SYMMETRICALLY ABOUT CENTERLINE OF STUD WITHIN ±.02.

INTERIM DOCUMENT REVISION		
Rev.	Date	DAF#
N1	10/8/2018	117431

APPROVED DATE 7 OCT 97	 ARCONIC Arconic Fastening Systems CAMLOC PRODUCTS 3012 WEST. LOMITA BLVD. TORRANCE, CA 90505-5103	TITLE: STUD ASSEMBLY BAIL HANDLE	CURRENT DESIGN ACTIVITY: CAGE CODE: 71286
REV. LETTER AND DATE N 30 NOV 10		UNLESS OTHERWISE SPECIFIED DIMENSIONS ARE IN INCHES & ASME Y14.5M TOLERANCES:	SALES DRAWING NO.
DAF NUMBER 94774		ANGLES = ± 1° FRACTIONS = ± 1/32 DECIMALS .XX = ±.02 .XXX = ±.010	40S47
			SHEET 1 OF 2

Camloc . Delron . Deutsch . Huck . K-Fast . Kaynar . Microdot . RAM . Rosan . Screwcorp . Tridair . Vai-Shan

MANUFACTURE OF THE PROPRIETARY PARTS SHOWN HERE WITHOUT WRITTEN CONSENT IS ABSOLUTELY PROHIBITED

PART NO. CALLOUT
40S47-() ()


SUFFIX	MATERIAL				FINISH
	STUD	CUP & SPACER	SPRING & CROSS PIN	HANDLE	
NONE					CADMIUM PLATE PER QQ-P-416, CLASS 2, TYPE II (YELLOW)
A	4037 STEEL PER AMS6300, ASTM A331, ASTM A322 ASTM A752 OR 1008-1010 STEEL PER ASTM A108	STEEL PER ASTM A109 OR ASTM A108 OR ASTM A684	MUSIC WIRE PER ASTM A228	HIGH CARBON STEEL	NICKEL PLATED PER QQ-N-290, CLASS 1, GRADE F, EXCEPT SPRING, CROSS PIN & SPACER CADMIUM PLATE QQ-P-416, CLASS 2, TYPE II
B					ZINC PLATE PER ASTM B633, TYPE III, CLASS 5 (CLEAR)
C					ZINC PLATE PER ASTM B633, CLASS 5, TYPE II (YELLOW)

DASH NUMBER	L	S
1	.383-.393	.84
2	.413-.423	.87
3	.443-.453	.90
4	.473-.483	.93
5	.503-.513	.96
6	.533-.543	.99
7	.563-.573	1.02
8	.593-.603	1.05
9	.623-.633	1.08
10	.653-.663	1.11
11	.683-.693	1.14
12	.713-.723	1.17
13	.743-.753	1.20
14	.773-.783	1.23
15	.803-.813	1.26

FOR -16 AND LONGER USE:
 * L" MIN = .353 + (.030 x DASH NUMBER)
 * L" MAX = " L" MIN + .010
 * S" = .81 + (.03 x DASH NUMBER)
 APPROX WEIGHT LBS/100:
 1.99 + (.0193 x DASH NUMBER)

THIS DRAWING ENCLOSES A CONFIDENTIAL, PROPRIETARY DESIGN & ALL DESIGN, MANUFACTURING PRODUCTION, USE & SALE RIGHTS REGARDING SAME ARE EXPRESSLY RESERVED.

INTERIM DOCUMENT REVISION		
Rev.	Date	DAF#
N1	10/8/2018	117431

APPROVED DATE 7 OCT 97	 ARCONIC Arconic Fastening Systems CAMLOC PRODUCTS 3012 WEST. LOMITA BLVD. TORRANCE, CA 90505-5103	TITLE: STUD ASSEMBLY BAIL HANDLE	CURRENT DESIGN ACTIVITY: CAGE CODE: 71286
REV. LETTER AND DATE N 30 NOV 10		UNLESS OTHERWISE SPECIFIED DIMENSIONS ARE IN INCHES & ASME Y14.5M TOLERANCES:	SALES DRAWING NO. 40S47
DAF NUMBER 94774		ANGLES = ± 1' FRACTIONS = ± 1/32 DECIMALS .XX = ± .02 .XXX = ± .010	SHEET 2 OF 2