

TABLE I

CATALOG PART NO.	L DIM	S DIM	WT LB/100
905122-1	MAX 3.95	MIN 1.74	WT LB/100 1.194
	MAX 4.23	MIN 1.77	WT LB/100 1.216
	MAX 4.53	MIN 1.80	WT LB/100 1.241
	MAX 4.83	MIN 1.83	WT LB/100 1.266
	MAX 5.13	MIN 1.86	WT LB/100 1.291
	MAX 5.43	MIN 1.89	WT LB/100 1.316
	MAX 5.73	MIN 1.92	WT LB/100 1.341
	MAX 6.03	MIN 1.95	WT LB/100 1.366
	MAX 6.33	MIN 1.98	WT LB/100 1.391
	MAX 6.63	MIN 2.01	WT LB/100 1.416
	MAX 6.93	MIN 2.04	WT LB/100 1.441
	MAX 7.23	MIN 2.07	WT LB/100 1.466
	MAX 7.53	MIN 2.10	WT LB/100 1.491
	MAX 7.83	MIN 2.13	WT LB/100 1.516
	MAX 8.13	MIN 2.16	WT LB/100 1.541

L MIN = .353 + (.03 x DASH NO.)

L MAX = L MIN + .010

FOR -1:

S DIM = .71 + (.03 x DASH NO.)

FOR -2:

S DIM = .76 + (.03 x DASH NO.)

WT-LB/100:

FOR -1: 1.243 + (.0193 x DASH NO.)

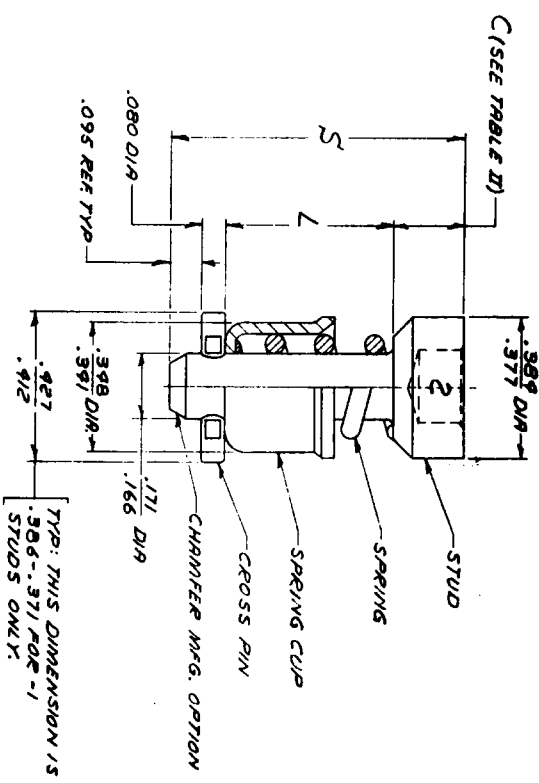
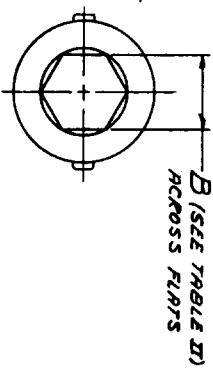
FOR -2: 1.265 + (.0193 x DASH NO.)

TABLE II

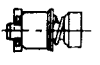
2nd DASH NO.	B MAX	C
-1	.157-.162 (9MM REF)	.182
-2	.236-.241 (6MM REF)	.230

TABLE III

SUFFIX	MATERIAL	SPRING CROSS PIN	SPRING CUP	STUD
AA	WIRE, MUSIC PER QQ-W-470	STEEL, CARBON PER ASTM A689, 1050	STEEL, ALL OY PER ASTM A331, 4037.	



ACTUAL SIZE (905122-2-119A SHOWN)



DRAWING NO. 405122

- TO AVOID OVER TORQUING, A SCREWDRIVER HANDLE TYPE TOOL IS RECOMMENDED FOR OPERATING THIS FASTENER INSTEAD OF A WRENCH OR RATCHET TYPE TOOL.
- CROSS PIN WILL WITHSTAND A 175 LB PUSHOUT FORCE & RETAIN SYN. ABOUT 5' OF STUD WITHIN 1.02.
- FOR STUD SELECTION & INSTALLATION DATA, SAME AS CATALOG CATALOG 4002 SERIES.

NOTES:

THIS DOCUMENT IS PROTECTED BY COPYRIGHT LAW. REPRODUCTION IN WHOLE OR IN PART WITHOUT WRITTEN PERMISSION OF THE COMPANY IS PROHIBITED.

SEE TABLE III

FINISH: ZINC PLATE PER QQ-F-326 CLASS 2, TYPE II

WEAT TREATMENT: SEE TABLE III

RECALL: SEE TABLE III

WAD: SEE TABLE III

DATE: 8-2-89

REV: 4002

405122

Raymond Inc. Specialty Fastener Division For. Sales, New Jersey

STUD ASSY-MAX RECESS, METRIC

MODEL OR DRAWING NO. 4002

CODE IDENT. NO. 7128