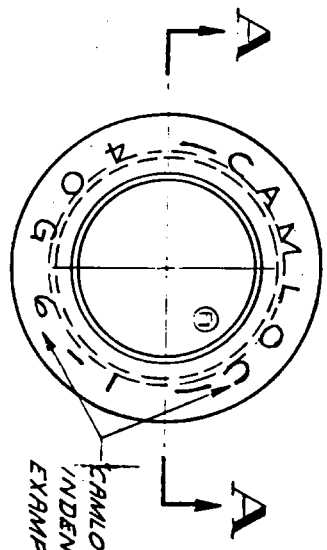
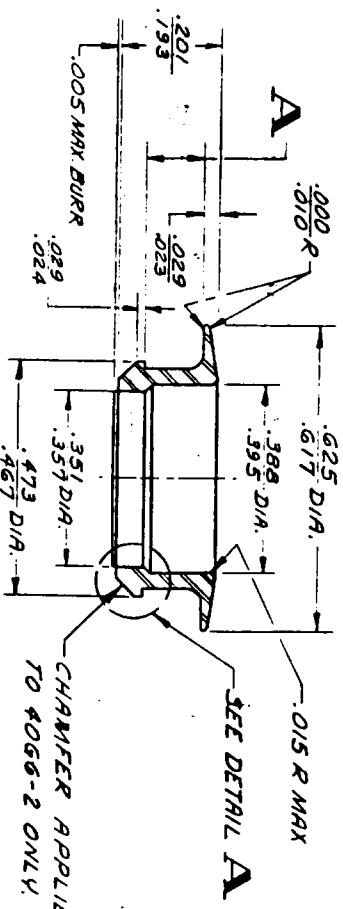
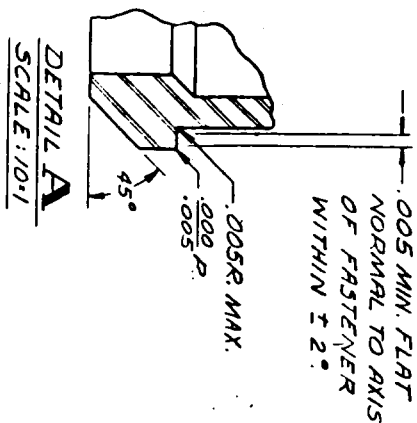


PART NO.	DIM. A		WEIGHT POUNDS PER 100 PIECES
	MIN	MAX	
4066-1	.144	.150	.303 (E)
4066-2	.114	.122	.320

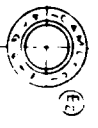
CER 1139  
 4066 REV. F



CAMLOC & CRT PART NO. INDENTED AS SHOWN. EXAMPLE: 4066-1.



CHAMFER APPLIES TO 4066-2 ONLY.



ACTUAL SIZE

- ALL EDGES BROKEN .005 MAX & ALL FINES & BURRS REMOVED EXCEPT WHERE OTHERWISE NOTED.
  - FOR INSTALLATION DATA, REFER TO CAMLOC CATALOG.
- NOTE:

THIS DOCUMENT IS PROTECTED BY COMMON LAW GOVERNMENT. IT RECEIVES CONFIDENCE AND SHALL NOT BE REPRODUCED, USED OR DISSEMINATED IN WHOLE OR IN PART WITHOUT WRITTEN PERMISSION OF CAMLOC FASTENER CORP.	
FINISH: ALUMINUM PLATE PER QQ-P-416 TYPE II CLASS 2 (OLIVE DRAB) (E)	
HEAT TREATMENT: 350, 000 PSI MIN TS	SCALE: 10:1
MATERIAL: ALLOY STEEL	WEIGHT: 0.303 (E)
TOLERANCES UNLESS OTHERWISE SPECIFIED: 3 PLACES DEC. 3, 011	DATE: 11/7/55

THIS DWG SUPERSEDES 4066-REV C.	
STOCK	REV. CHANGE
D	REDRAWN WITH CHANGES
OK	BY DATE CHK/DATE 4 APP
OK	LOCATED LETTERING
F	SEE DAN # 1139
BZDEK 8-15-59	VP

4066 F